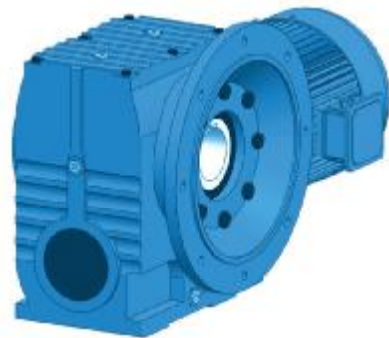


S系列斜齿轮—蜗轮蜗杆减速电机
S Series Helical-worm Gear Units



S- 底脚安装轴伸式斜齿轮—蜗轮蜗杆减速电机
S- Foot-mounted with Shaft-extension Type

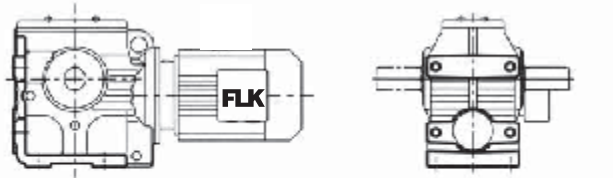


SA-A-F 法兰空心轴安装斜齿轮—蜗轮蜗杆减速电机
SA-A-F Flange-mounted with Hollow shaft

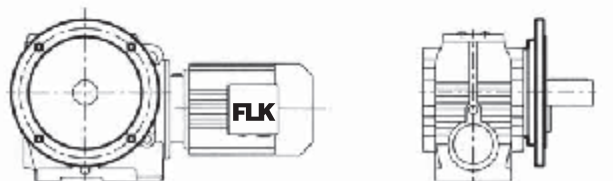


SA-A-T 力矩臂空心轴斜齿轮—蜗轮蜗杆减速电机
SA-A-T Torque arm-mounted with Hollowshaft

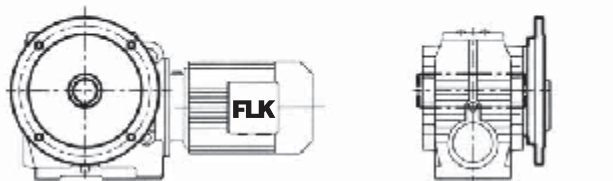
可以提供下列型号斜齿轮减速电机 / Available Versions



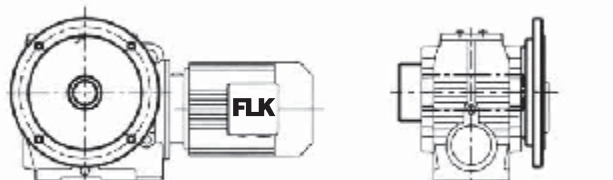
S-Y
底脚安装斜齿轮—蜗轮蜗杆减速电机
S-Y
Foot-mounted



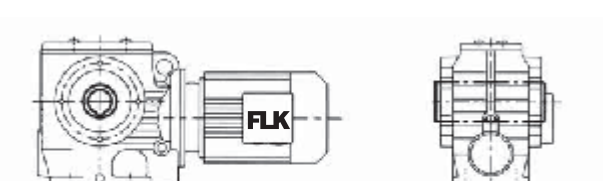
SA-F-Y
B5法兰安装斜齿轮—蜗轮蜗杆减速电机
SA-F-Y
B5 Flange-mounted



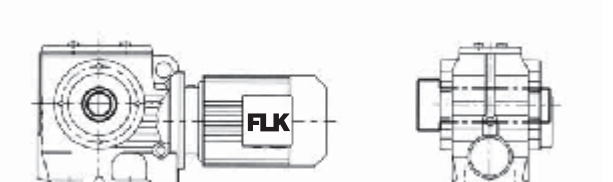
SA-A-F-Y
B5法兰空心轴安装斜齿轮—蜗轮蜗杆减速电机
SA-A-F-Y
B5 Flange mounted with Hollow shaft



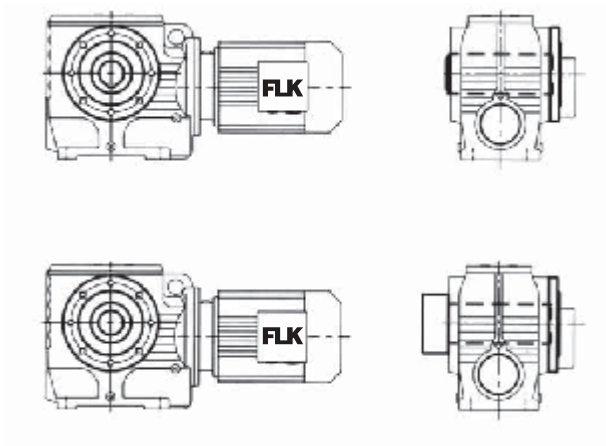
SA-H-F-Y
B5法兰空心轴锁紧盘安装斜齿轮—蜗轮蜗杆减速电机
SA-H-F-Y
B5 Flange Hollow shaft with shrink disk mounted



SA-A-Y
空心轴斜齿轮—蜗轮蜗杆减速电机
SA-A-Y
Hollow shaft



SA-H-Y
空心轴锁紧盘安装斜齿轮—蜗轮蜗杆减速电机
SA-H-Y
Hollow shaft with shrink disk mounted



SA-A-Z-Y

B14法兰空心轴安装斜齿轮—蜗轮蜗杆减速电机

SA-A-Z-Y

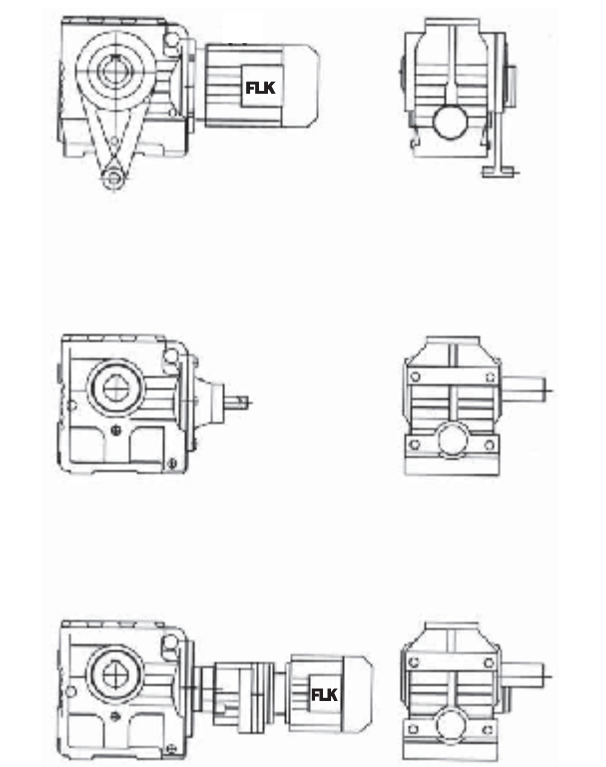
B14 Flange with Hollow-shaft mounted

SA-H-Z-Y

B14法兰空心轴锁紧安装斜齿轮—蜗轮蜗杆减速电机

SA-H-Z-Y

B14 Flange Hollow-shaft with shrink disk mounted



SA-A-T

力矩臂空心轴安装斜齿轮—蜗轮蜗杆减速电机

SA-A-T

Torque-arm with Hollow-shaft mounted

S-AD

轴输入型斜齿轮—蜗轮蜗杆减速电机

S-AD

Input Shaft type

S-RF-F

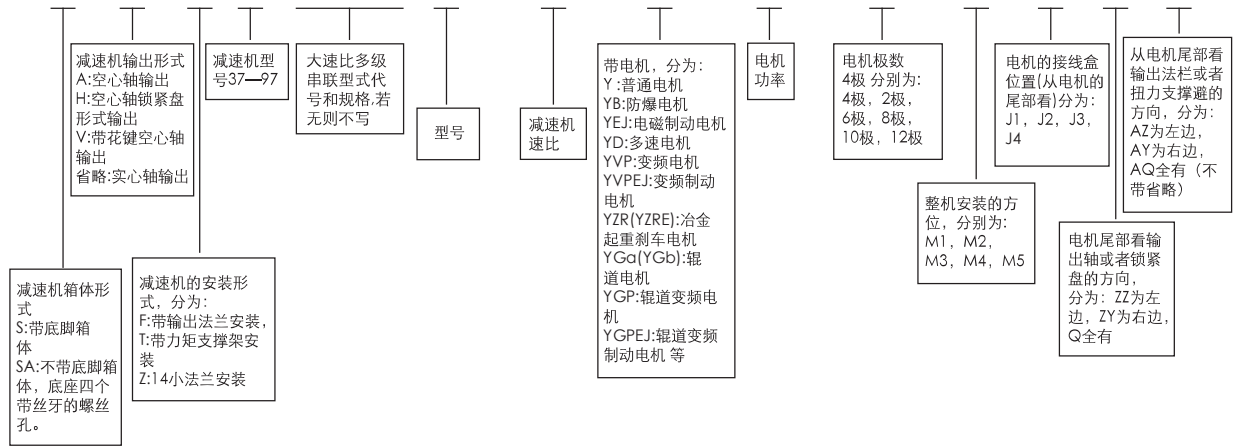
多级串联的组合式斜齿轮—蜗轮蜗杆减速电机

S-RF-F

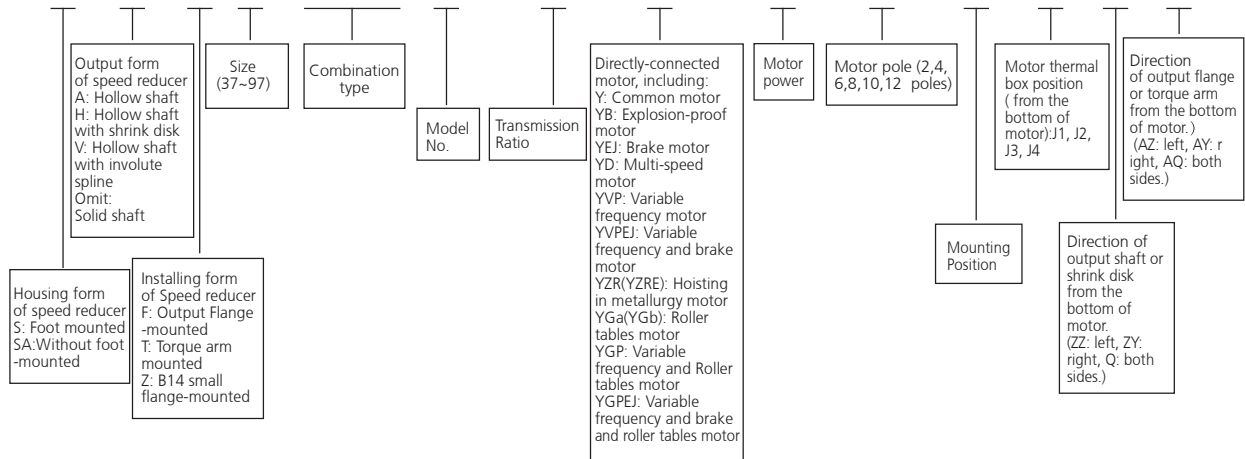
The combination of Multi-stage series type

型号与标记 / Type Designation

S - H - F - 97 - RF - F - 57 - 62.55 - Y - 5.5KW - 4P - M1 - J1 - ZZ - AZ



S - H - F - 97 - RF - F - 57 - 62.55 - Y - 5.5KW - 4P - M1 - J1 - ZZ - AZ



- ① 带直联电机单组减速机 Directly-connected motor speed reducer
S-H-F-97-62.55-Y-5.5KW-4P-M1-J1-ZZ-AZ
- ② 带直联电机双组减速机 Directly-connected motor Speed reducer(Combination type)
S-H-F-97-RF-F-57-62.55-Y-5.5KW-4P-M1-J1-ZZ-AZ
- ③ 带电机带输入法兰 With motor and input flange
S-H-F-97-62.55-AM132B5-Y-5.5KW-4P-M1-J1-ZZ-AZ
- ④ 不带电机带输入法兰 Input flange-mounted, without motor
S-H-F-97-62.55-AM132B5-M1-J1-ZZ-AZ
- ⑤ 带输入轴 With input shaft
S-H-F-97-62.55-AD4-M1-ZZ-AZ

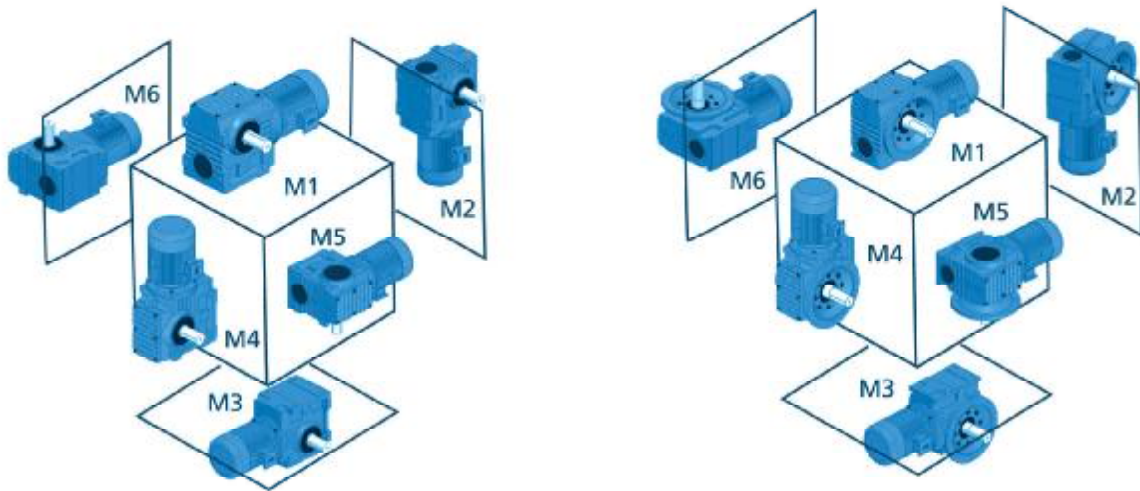
AM132B5: 带过度法兰电机的IEC标准法兰尺寸(可查阅电机样本)

AD4: 轴输入 输入轴的大小分为: AD1, AD2, AD3, AD4, AD5, AD6, AD7, AD8.

AM132B5: Dimension of IEC flange (please refer to our catalogue)

AD4: Input shaft (AD1, AD2, AD3, AD4, AD5, AD6, AD7, AD8)

安装形式 / Mounting Positions:



电机接线盒位置 / Position Of The Motor Thermal Box



J1(0°)



J2(270°)



J3(180°)



J4(90°)

速比范围与最大扭矩 / Transmission Ratio Range & Maximum Torque

机型号 Size	37	47	57	67	77	87	97
结构形式 Type	S/SA-F						
传动比 Transmission ratio	6.80~157.43	7.28~201	7.28~201	7.56~217.41	8.06~256.47	7.88~288	8.26~286.4
最大扭矩 (N·m) Maximum torque (N.m)	90	170	300	520	1270	2280	4000

s系列减速机注油量见下表：（表中数值仅为参考值，具体以减速机油位孔位置为准）

Data in the table is for reference, operation is subject to oil level and oil sight glass.

润滑油量表 / Lubricant Sheet

机型号 / Size	润滑油量(升) / Lubricant (liter)					
	M1	M2	M3 ¹⁾	M4	M5	M6
S-37	0.25	0.4	0.5	0.6	0.4	0.4
S-47	0.35	0.8	0.7	1.1	0.8	0.8
S-57	0.5	1.2	1	1.	1.3	1.3
S-67	1	2.0	2.2/3.1	3.2	2.6	2.6
S-77	1.9	4.2	3.7/5.4	6	4.4	4.4
S-87	3.3	8.1	6.9/10.4	12	8.4	8.4
S-97	6.8	15	13.4/18	22.5	17	17

SA-F-

机型号 / Size	润滑油量(升) / Lubricant (liter)					
	M1	M2	M3 ¹⁾	M4	M5	M6
SA-F-37	0.25	0.4	0.5	0.6	0.4	0.4
SA-F-47	0.4	0.9	0.9	1.2	1.0	1.0
SA-F-57	0.5	1.2	1	1.6	1.4	1.4
SA-F-67	1	2.2	2.3/3	3.2	2.7	2.7
SA-F-77	1.9	4.1	3.9/5.8	6.5	4.9	4.9
SA-F-87	3.8	8	7.1/10.1	12	9.1	9.1
SA-F-97	7.4	15	13.8/18.8	23.6	18	18

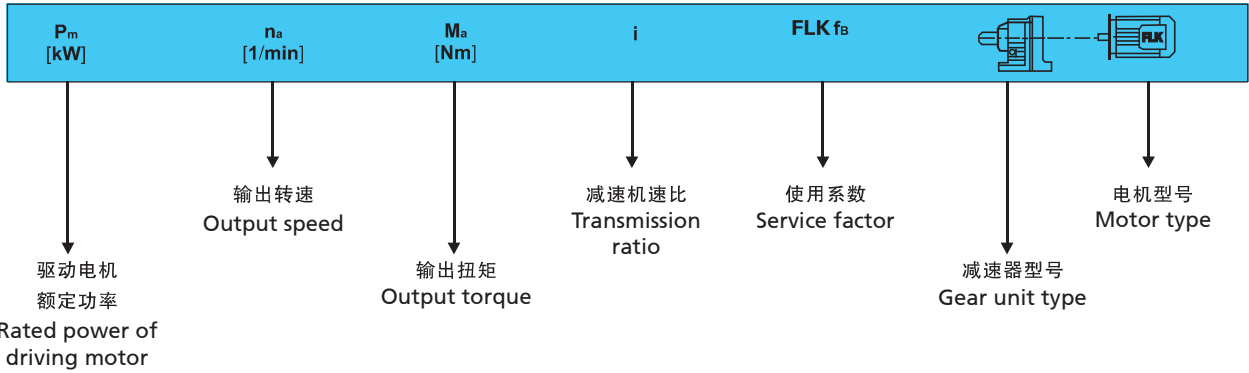
SA-A、SA-A-F、SA-A-F-

机型号 / Size	润滑油量(升) / Lubricant (liter)					
	M1	M2	M3 ¹⁾	M4	M5	M6
SA-A-F-37	0.25	0.4	0.5	0.6	0.4	0.4
SA-A-F-47	0.4	0.8	0.7	1.1	0.8	0.8
SA-A-F-57	0.5	1.1	1	1.6	1.2	1.2
SA-A-F-67	1	2.0	1.8/2.6	2.9	2.5	2.5
SA-A-F-77	1.8	3.9	3.6/5	5.9	4.5	4.5
SA-A-F-87	3.8	7.4	6/8.7	11.2	8	8
SA-A-F-97	7	14	11.4/16	21	15.7	15.7

注: 1)表示减速机为组合型时低速级所加油量为大值。

Note: 1) Combinational type at low speed is the maximum quantity of oil.

承载能力表的结构 / Capacity Table Structure



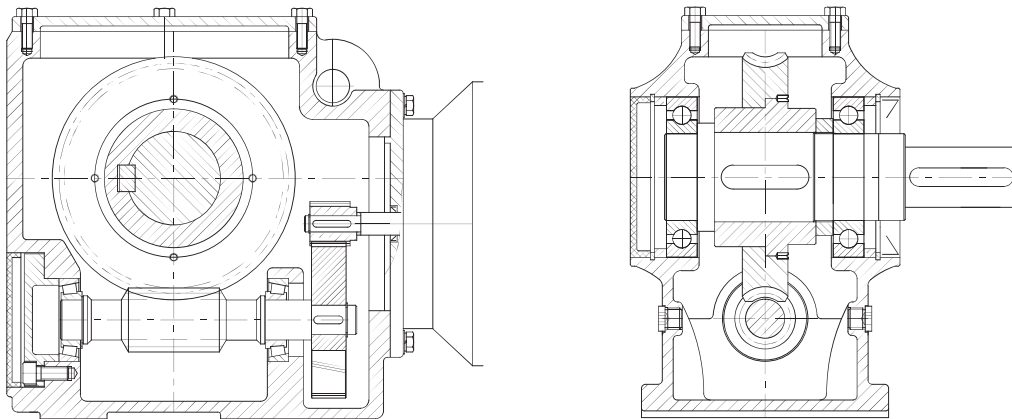
S系列减速机重量 (KG)

型号Type	S37	S47	S57	S67	S77	S87	S97
重量Weight	8	10	13.5	25	43	85	149

说明：带输入轴输入法兰的机型重量约增加20%，带电机的机型根据所配电机的重量而增加。

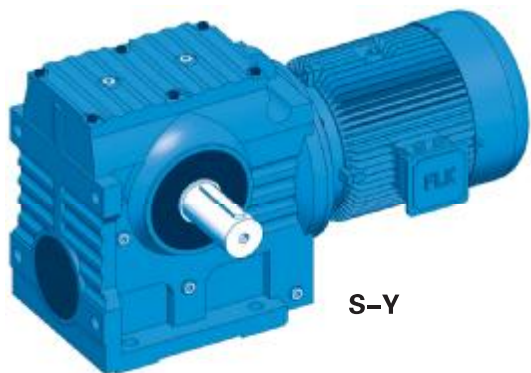
Note: Weight of reducer with input flange should be added 20%, if there is a motor, please add weight according to motor.

结构示意图 / Sectional Drawings



S-Y

S, S-F, SA-A-F, SA-A, SA-H, SA-T, SA-A-Z, SA-H-Z-Y



S-Y



SA-F-Y

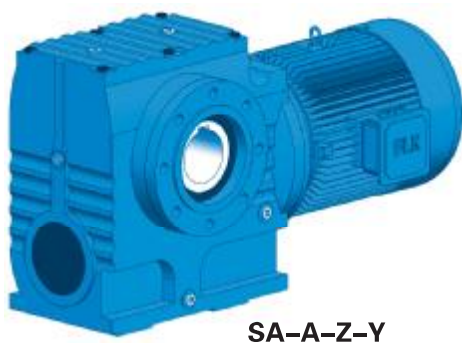
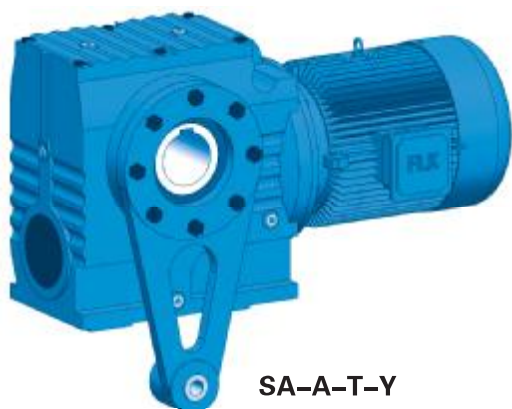


SA-A-F-Y



SA-H-F-Y

S





输出转速 Output speed (r/min)	输出扭矩 Output torque (N.M)	传动比 Ratio (i)	使用系数 Service factor (fB)	机型号 Type	电机级数 Motor pole	输出转速 Output speed (r/min)	输出扭矩 Output torque (N.M)	传动比 Ratio (i)	使用系数 Service factor (fB)	机型号 Type	电机级数 Motor pole
0.12KW						0.12KW					
0.12	4610	11267	0.90	S97-RF57	4P	6.9	95	201.00	1.80		
0.14	4210	10078	1.00	SF97-RF57	4P	7.5	89	184.80	1.90	S-47	4P
0.16	3500	8608	1.20	SA97-RF57	4P	8.7	77	158.12	2.2	SA-F-47	4P
0.18	3090	7554	1.35	SAF97-RF57	4P	10	68	137.05	2.5	SA-A-47	4P
						11	64	128.10	2.6	SA-A-F-47	4P
						12	57	110.73	3.0		
0.18	3120	7643	0.80			5.7	107	157.43	0.85		
0.21	2630	6706	0.95	S87-RF57	4P	6.2	99	144.40	0.95	S-37	6P
0.23	2330	5875	1.05	SF87-RF57	4P	7.3	86	122.94	1.05	SA-F-37	6P
0.27	1960	5187	1.25	SA87-RF57	4P	8.5	76	106.00	1.20	SA-A-37	6P
0.30	1740	4606	1.45	SAF87-RF57	4P	9.1	71	98.80	1.30	SA-A-F-37	6P
0.36	1450	3872	1.70			10	64	86.36	1.45		
0.39	1340	3540	0.95			8.8	74	157.43	1.25		
0.45	1170	3098	1.10			9.6	68	144.40	1.35		
0.58	1280	2374	0.95	S77-RF37	4P	11	60	122.94	1.55		
0.66	1130	2083	1.10	SF77-RF37	4P	13	52	106.00	1.70		
0.76	960	1813	1.30	SA77-RF37	4P	14	49	98.80	1.75		
0.79	910	1745	1.35	SAF77-RF37	4P	16	44	86.36	1.95		
0.86	840	1600	1.50			17	41	80.96	2.1	S-37	4P
0.98	735	1404	1.70			19	37	71.44	2.3	SA-F-37	4P
1.1	645	1245	1.90			22	33	63.33	2.5	SA-A-37	4P
						25	35	55.93	2.3	SA-A-F-37	4P
1.0	665	1363	0.85			27	33	51.30	2.5		
1.2	575	1194	1.00			32	28	43.68	2.9		
1.3	515	1045	1.10	S67-RF37	4P	37	25	37.66	3.2		
1.5	445	914	1.30	SF67-RF37	4P	39	23	35.10	3.4		
1.7	400	809	1.40	SA67-RF37	4P	45	20	30.68	3.7		
1.9	355	712	1.60	SAF67-RF37	4P	48	19	28.76	3.9		
2.2	295	615	1.95			54	17	25.38	4.3		
2.5	265	543	2.2			61	15	22.50	4.8		
2.9	220	469	2.6			69	14	19.89	3.6		
3.3	197	424	2.9			76	13	18.24	3.9		
3.8	180	365	3.2			89	11	15.53	4.4		
2.1	315	655	0.95			0.18KW					
2.4	275	574	1.10			0.29	2970	4606	0.85		
2.7	240	506	1.25	S57-RF17	4P	0.34	2480	3872	1.00		
3.2	210	438	1.45	SF57-RF17	4P	0.38	2350	3475	1.05		
3.6	183	388	1.65	SA57-RF17	4P	0.45	1970	2905	1.10	S87-RF57	4P
4.1	163	336	1.85	SAF57-RF17	4P	0.51	1710	2586	1.25	SF87-RF57	4P
4.7	140	294	2.1			0.57	1520	2335	1.45	SA87-RF57	4P
5.1	134	269	2.2			0.64	1320	2054	1.90	SAF87-RF57	4P
						0.72	1170	1824	2.1		
						0.81	1050	1631	2.4		
3.2	210	438	0.90			0.94	1220	1404	1.00		
3.6	183	388	1.00			1.1	1070	1245	1.15		
4.1	162	336	1.15	S47-RF17	4P	1.2	990	1100	1.25	S77-RF37	4P
4.7	139	294	1.35	SF47-RF17	4P	1.4	850	954	1.45	SF77-RF37	4P
5.4	113	257	1.95	SA47-RF17	4P	1.6	745	837	1.65	SA77-RF37	4P
6.0	99	229	1.65	SAF47-RF17	4P	1.9	625	714	2.0	SAF77-RF37	4P
6.9	95	200	1.90			2.1	555	637	2.2		
7.4	92	187	2.0			2.3	500	574	2.5		
6.8	99	202	0.95			1.6	660	809	0.85		
7.7	88	179	1.05	S37-RF17	4P	1.9	580	712	1.00		
8.7	78	158	1.15	SF37-RF17	4P	2.2	490	615	1.15	S67-RF37	4P
9.6	72	144	1.25	SA37-RF17	4P	2.4	440	543	1.30	SF67-RF37	4P
12	59	118	1.55	SAF37-RF17	4P	2.8	370	469	1.55	SA67-RF37	4P
13	55	110	1.65			3.1	335	424	1.70	SAF67-RF37	4P
						3.6	295	365	1.90		
4.5	143	201.00	2.1	S-57	6P	3.0	345	438	0.85		
4.9	133	184.80	2.2	SA-F-57	6P	3.4	305	388	1.00	S57-RF17	4P
5.7	116	158.12	2.5	SA-A-57	6P	3.9	270	336	1.10	SF57-RF17	4P
6.6	103	137.05	2.9	SA-A-F-57	6P	4.5	235	264	1.30	SA57-RF17	4P
						4.9	220	269	1.35	SAF57-RF17	4P

输出转速 Output speed (r/min)	输出扭矩 Output torque (N.M)	传动比 Ratio (i)	使用系数 Service factor (fB)	机型号 Type	电机级数 Motor pole	输出转速 Output speed (r/min)	输出扭矩 Output torque (N.M)	传动比 Ratio (i)	使用系数 Service factor (fB)	机型号 Type	电机级数 Motor pole
0.18KW						0.25KW					
5.8	188	229	1.60	S57-RF17	4P	0.45	2860	2905	0.85		
6.5	169	204	1.80	SF57-RF17	4P	0.50	2500	2586	1.00	S87-RF57	4P
7.1	154	187	1.95	SA57-RF17	4P	0.63	2240	2335	1.10	SF87-RF57	4P
				SAF57-RF17	4P	0.71	1950	2054	1.30	SA87-RF57	4P
						0.80	1550	1631	1.60	SAF87-RF57	4P
4.5	230	294	0.80			1.4	910	930	2.8		
5.1	158	257	1.15			1.4	1230	954	1.00		
5.8	185	229	1.00	S47-RF17	4P	1.5	1080	837	1.15	S77-RF37	4P
6.6	162	200	1.15	SF47-RF17	4P	1.8	910	714	1.35	SF77-RF37	4P
7.1	152	187	1.20	SA47-RF17	4P	2.0	810	637	1.55	SA77-RF37	4P
8.0	134	165	1.40	SAF47-RF17	4P	2.3	730	574	1.70	SAF77-RF37	4P
8.9	121	148	1.55			2.6	625	499	2.0		
10	108	131	1.70								
4.0	255	217.41	2.5	S-67	6P	2.4	635	543	0.90		
4.6	225	190.11	2.5	SA-F-67	6P	2.8	540	469	1.05	S67-RF37	4P
4.8	215	180.60	2.6	SA-A-67	6P	3.1	485	424	1.15	SF67-RF37	4P
				SA-A-F-67	6P	3.6	430	365	1.30	SA67-RF37	4P
4.3	220	201.00	1.35	S-57	6P	4.1	375	319	1.50	SAF67-RF37	4P
4.7	205	184.80	1.45	SA-F-57	6P	4.6	330	281	1.75		
5.5	180	158.12	1.65	SA-A-57	6P						
6.3	159	137.05	1.85	SA-A-F-57	6P	4.4	340	294	0.90		
						4.8	315	269	0.95	S57-RF17	4P
6.6	154	201.00	1.90	S-57	4P	5.7	270	229	1.10	SF57-RF17	4P
7.1	143	184.80	2.1	SA-F-57	4P	6.4	245	204	1.25	SA57-RF17	4P
8.4	125	158.12	2.4	SA-A-57	4P	6.9	225	187	1.35	SAF57-RF17	4P
9.6	110	137.05	2.7	SA-A-F-57	4P	7.9	198	165	1.50		
						9.9	159	131	1.90		
4.3	215	201.00	0.85	S-47	6P	3.1	435	217.41	1.30	S-67	8P
4.7	199	184.80	0.90	SA-F-47	6P	3.6	390	190.11	1.45	SA-F-67	8P
5.5	173	158.12	1.00	SA-A-47	6P	3.8	370	180.60	1.50	SA-A-67	8P
6.3	153	137.05	1.10	SA-A-F-47	6P	4.3	330	158.45	1.70	SA-A-F-67	8P
6.8	144	128.10	1.20								
6.6	149	201.00	1.15			4.1	350	217.41	1.60	S-67	6P
7.1	138	184.80	1.25			4.6	310	190.11	1.80	SA-F-67	6P
8.4	121	158.12	1.40	S-47	4P	4.9	295	180.60	1.90	SA-A-67	6P
9.6	107	137.05	1.60	SA-F-47	4P	5.6	265	158.45	2.1	SA-A-F-67	6P
10	100	128.10	1.65	SA-A-47	4P						
12	88	110.73	1.90	SA-A-F-47	4P	6.0	245	217.41	2.1		
14	77	94.08	2.2			6.8	220	190.11	2.4	S-67	4P
16	69	84.00	2.4			7.2	210	180.60	2.5	SA-F-67	4P
18	60	71.75	2.8			8.2	187	158.45	2.8	SA-A-67	4P
19	69	69.36	2.2			9.7	161	134.40	3.2	SA-A-F-67	4P
						11	147	121.33	3.5		
						12	131	106.75	4.0		
8.4	115	157.43	0.80			4.4	305	201.00	1.00		
9.1	107	144.40	0.85			4.8	285	184.80	1.05	S-57	6P
11	93	122.94	1.00			5.6	245	158.12	1.20	SA-F-57	6P
12	82	106.00	1.10			6.4	220	137.05	1.35	SA-A-57	6P
13	77	98.8	1.15			6.9	205	128.10	1.45	SA-A-F-57	6P
15	68	86.36	1.25								
16	64	80.96	1.30			6.5	215	201.00	1.35		
18	58	71.44	1.45			7.0	200	184.80	1.45		
21	52	63.66	1.60	S-37	4P	8.2	176	158.12	1.70	S-57	4P
24	55	55.93	1.45	SA-F-37	4P	9.5	155	137.05	1.90	SA-F-57	4P
26	51	51.30	1.60	SA-A-37	4P	10	146	128.10	2.0	SA-A-57	4P
30	44	43.46	1.85	SA-A-F-37	4P	12	129	110.73	2.3	SA-A-F-57	4P
35	38	37.66	2.1			14	111	94.08	2.7		
38	36	35.10	2.2			15	101	84.00	2.9		
43	32	30.68	2.4								
46	30	28.76	2.5			6.5	210	201.00	0.80		
52	27	25.38	2.8			7.0	195	184.80	0.85		
59	24	22.50	3.1			8.2	170	158.12	1.00	S-47	4P
66	22	19.89	2.3			9.5	150	137.05	1.10	SA-F-47	4P
72	21	18.24	2.5			10	141	128.10	1.20	SA-A-47	4P
85	18	15.53	2.8			12	124	110.73	1.3	SA-A-F-47	4P
99	15	13.39	3.2			14	108	94.08	1.55		
106	14	12.48	3.4			15	98	84.00	1.70		
121	13	10.91	3.8			18	85	71.75	1.95		
129	12	10.23	4.0			19	97	69.39	1.60		





输出转速 Output speed (r/min)	输出扭矩 Output torque (N.M)	传动比 Ratio (i)	使用系数 Service factor (fB)	机型号 Type	电机级数 Motor pole	输出转速 Output speed (r/min)	输出扭矩 Output torque (N.M)	传动比 Ratio (i)	使用系数 Service factor (fB)	机型号 Type	电机级数 Motor pole
0.25KW						0.37KW					
19	80	67.20	2.1	S-47	4P	6.3	345	217.41	1.50		
20	90	63.80	1.70	SA-F-47	4P	7.3	310	190.11	1.70	S-67	4P
24	78	54.59	2.0	SA-A-47	4P	7.6	295	180.60	1.75	SA-F-67	4P
27	68	47.32	2.3	SA-A-F-47	4P	8.7	260	158.45	2.0	SA-A-67	4P
						10	225	134.40	2.3	SA-A-F-67	4P
						11	205	121.33	2.5		
13	108	98.80	0.80			5.7	360	158.12	0.80		
15	96	86.36	0.90			6.6	315	137.05	0.95	S-57	6P
16	91	80.96	0.95			7.0	300	128.10	1.00	SA-F-57	6P
18	81	71.44	1.05			8.1	265	110.73	1.10	SA-A-57	6P
21	73	63.33	1.10	S-37	4P	9.6	230	94.08	1.30	SA-A-F-57	6P
23	78	55.93	1.05	SA-F-37	4P	11	205	84.00	1.45		
25	72	51.30	1.15	SA-A-37	4P						
30	62	43.68	1.30	SA-A-F-37	4P	6.9	305	201.00	0.95		
35	54	37.66	1.45			7.5	285	184.80	1.05		
37	51	35.10	1.55			8.7	245	158.12	1.20		
42	45	30.68	1.70			10	220	137.05	1.35	S-57	4P
45	42	28.76	1.80			11	205	128.10	1.45	SA-F-57	4P
51	37	25.38	2.0			12	180	110.73	1.65	SA-A-57	4P
58	33	22.50	2.2			15	156	94.08	1.90	SA-A-F-57	4P
65	32	19.89	1.65			16	141	84.00	2.1		
71	29	18.24	1.80			19	122	71.75	2.4		
84	25	15.53	2.0			20	139	69.39	1.75		
97	22	13.39	2.3			21	115	67.20	2.5		
104	20	12.48	2.4			22	128	63.80	1.90		
119	18	10.91	2.7								
127	19	10.23	2.8			10	210	137.05	0.80		
144	15	9.02	3.1			11	199	128.10	0.85		
163	13	8.00	3.4			12	175	110.73	0.95		
191	11	6.80	3.8			15	151	94.08	1.10		
						16	137	84.00	1.20		
92	21	28.76	3.0			19	119	71.75	1.40	S-47	4P
105	19	25.38	3.3			20	136	69.39	1.15	SA-F-47	4P
118	17	22.50	3.4	S-37	2P	21	112	67.20	1.50	SA-A-47	4P
134	16	19.89	2.8	SA-F-37	2P	22	126	63.80	1.25	SA-A-47	4P
146	15	18.24	3.0	SA-A-37	2P	25	109	54.59	1.40	SA-A-F-47	4P
171	13	15.53	3.4	SA-A-F-37	2P	29	96	47.32	1.60		
199	11	13.39	3.8			31	90	44.22	1.75		
213	10	12.48	4.0			36	78	38.23	2.0		
						42	67	32.48	2.3		
0.37KW						48	60	29.00	2.6		
0.67	2810	2054	0.90	S87-RF57	4P	56	52	24.77	3.0		
0.76	2490	1824	1.00	SF87-RF57	4P	59	49	23.20	3.1		
0.85	2230	1631	1.10	SA87-RF57	4P	68	46	20.33	2.4		
1.5	1320	930	1.90	SAF87-RF57	4P	78	40	17.62	2.8		
1.7	1190	831	2.1			84	37	16.47	3.0		
1.9	1290	714	0.95			22	103	63.33	0.80		
2.2	1150	637	1.10	S77-RF37	4P	27	101	51.30	0.80		
2.4	1040	574	1.20	SF77-RF37	4P	32	87	43.68	0.95		
2.8	900	499	1.40	SA77-RF37	4P	37	73	37.66	1.05		
3.2	785	438	1.60	SAF77-RF37	4P	39	71	35.10	1.10		
3.5	700	389	1.80			45	63	30.68	1.20		
						48	59	28.76	1.30	S-37	4P
3.8	615	365	0.95	S67-RF37	4P	54	52	25.38	1.40	SA-F-37	4P
4.3	535	319	1.05	SF67-RF37	4P	61	47	22.50	1.55	SA-A-37	4P
4.9	470	281	1.20	SA67-RF37	4P	69	44	19.89	1.20	SA-A-F-37	4P
5.6	425	246	1.35	SAF67-RF37	4P	76	41	18.24	1.30		
						89	35	15.53	1.45		
2.4	980	288.00	2.5	S-87	8P	103	30	13.39	1.60		
2.6	890	258.18	2.8	SA-F-87	8P	111	28	12.48	1.70		
3.1	775	222.40	3.2	SA-A-87	8P	127	25	10.91	1.95		
				SA-A-F-87	8P	135	23	10.23	2.0		
3.0	735	225.26	1.75	S-77	6P	153	21	9.02	2.2		
3.2	700	214.00	1.80	SA-F-77	6P	173	18	8.00	2.5		
3.6	630	189.09	2.0	SA-A-77	6P	203	16	6.80	2.7		
4.2	545	161.60	2.3	SA-A-F-77	6P						
4.1	505	217.41	1.10	S-67	6P						
4.7	450	190.11	1.25	SA-F-67	6P						
5.0	430	180.60	1.30	SA-A-67	6P						
5.7	380	158.45	1.45	SA-A-F-67	6P						

输出转速 Output speed (r/min)	输出扭矩 Output torque (N.M)	传动比 Ratio (i)	使用系数 Service factor (fB)	机型号 Type	电机级数 Motor pole	输出转速 Output speed (r/min)	输出扭矩 Output torque (N.M)	传动比 Ratio (i)	使用系数 Service factor (fB)	机型号 Type	电机级数 Motor pole
0.37KW						0.55KW					
104	28	25.38	2.2			9.6	340	94.08	0.85		
118	25	22.50	2.3			11	305	84.00	0.95		
133	24	19.89	1.85			13	265	71.75	1.10	S-57	6P
145	22	18.24	2.0	S-37	2P	13	250	67.20	1.15	SA-F-57	6P
171	19	15.53	2.3	SA-F-37	2P	16	245	54.59	1.10	SA-A-57	6P
198	16	13.39	2.5	SA-A-37	2P	19	215	47.32	1.25	SA-A-F-57	6P
212	15	12.48	2.7	SA-A-F-37	2P	20	200	44.22	1.35		
243	13	10.91	3.0			24	176	38.23	1.55		
259	12	10.23	3.1								
294	11	9.02	3.3								
0.55KW						0.55KW					
1.0	2810	1332	1.90			8.6	370	158.12	0.80		
1.1	2540	1191	1.00			9.9	330	137.05	0.90		
1.3	2210	1032	1.15	S87-RF57	4P	11	310	128.10	0.95		
1.5	2040	930	1.25	SF87-RF57	4P	12	270	110.73	1.10		
1.6	1840	831	1.35	SA87-RF57	4P	14	235	94.08	1.25		
1.9	1600	719	1.55	SAF87-RF57	4P	16	210	84.00	1.40		
2.2	1400	624	1.80			19	184	71.75	1.55	S-57	4P
2.4	1270	558	1.95			20	174	67.20	1.65	SA-F-57	4P
3.1	1010	435	2.4			25	167	54.59	1.45	SA-A-57	4P
						29	146	47.32	1.70	SA-A-F-57	4P
2.7	1380	499	0.90			31	137	44.22	1.80		
3.1	1210	438	1.05	S77-RF37	4P	36	120	38.23	2.0		
3.5	1070	389	1.15	SF77-RF37	4P	42	103	32.48	2.4		
4.2	910	327	1.35	SA77-RF37	4P	47	92	29.00	2.7		
4.7	820	289	1.50	SAF77-RF37	4P	55	79	24.77	3.1		
5.4	710	250	1.75			59	75	23.20	3.3		
						67	69	20.33	2.4		
5.5	650	246	0.90	S67-RF37	4P						
6.2	580	221	1.00	SF67-RF37	4P	16	205	84.00	0.80		
6.9	530	198	1.10	SA67-RF37	4P	19	179	71.75	0.95		
8.1	455	168	1.25	SAF67-RF37	4P	20	169	67.20	1.00		
						25	165	54.59	0.95		
2.4	1450	288.00	1.70	S-87	8P	29	144	47.32	1.10		
2.6	1320	258.18	1.85	SA-F-87	8P	31	135	44.22	1.15		
3.1	1150	222.40	2.1	SA-A-87	8P	36	118	38.23	1.30	S-47	4P
				SA-A-F-87	8P	42	101	32.48	1.55	SA-F-47	4P
3.1	1130	288.00	2.2	S-87	6P	47	91	29.00	1.70	SA-A-47	4P
3.5	1020	258.18	2.4	SA-F-87	6P	55	78	24.77	2.0	SA-A-F-47	4P
4.1	900	222.40	2.7	SA-A-87	6P	59	74	23.20	2.1		
4.4	820	202.96	2.9	SA-A-F-87	6P	67	69	20.33	1.30		
						77	60	17.62	1.85		
3.0	1090	225.26	1.15	S-77	8P	83	56	16.47	1.95		
3.2	1040	214.00	1.20	SA-F-77	8P	96	49	14.24	2.2		
3.6	930	189.09	1.35	SA-A-77	8P	112	42	12.10	2.6		
4.2	810	161.60	1.55	SA-A-F-77	8P	126	37	10.80	2.9		
						147	32	9.23	3.4		
3.5	960	256.47	1.35	S-77	6P						
4.0	850	225.26	1.50	SA-F-77	6P	44	94	30.68	0.80		
4.2	810	214.00	1.55	SA-A-77	6P	47	89	28.76	0.85		
4.8	730	189.09	1.75	SA-A-F-77	6P	54	79	25.38	0.95		
5.6	635	161.60	2.0			60	70	22.50	1.05		
						71	60	19.13	1.20	S-37	4P
5.3	660	256.47	1.90	S-77	4P	88	53	15.53	0.95	SA-F-37	4P
6.0	590	225.26	2.2	SA-F-77	4P	102	46	13.39	1.10	SA-A-37	4P
6.4	560	214.00	2.3	SA-A-77	4P	109	43	12.48	1.15	SA-A-F-37	4P
7.2	505	189.09	2.5	SA-A-F-77	4P	125	37	10.91	1.30		
						133	35	10.23	1.35		
6.3	520	217.41	1.00			151	31	9.02	1.50		
7.2	465	190.11	1.10			170	28	8.00	1.60		
7.5	445	180.60	1.15			200	24	6.80	1.80		
8.6	395	158.45	1.30	S-67	4P						
10	340	134.40	1.55	SA-F-67	4P	94	46	28.76	1.40		
11	310	121.33	1.65	SA-A-67	4P	106	41	25.38	1.50		
13	275	106.75	1.85	SA-A-F-67	4P	120	37	22.50	1.55	S-37	2P
13	265	100.80	1.95			136	34	19.89	1.30	SA-F-37	2P
16	230	85.83	2.3			148	32	18.24	1.40	SA-A-37	2P
18	230	75.06	2.1			174	27	15.53	1.55	SA-A-F-37	2P
21	205	65.63	2.3			202	24	13.39	1.75		
						216	22	12.48	1.85		
						248	19	10.91	2.0		





输出转速 Output speed (r/min)	输出扭矩 Output torque (N.M)	传动比 Ratio (i)	使用系数 Service factor (fB)	机型号 Type	电机级数 Motor pole	输出转速 Output speed (r/min)	输出扭矩 Output torque (N.M)	传动比 Ratio (i)	使用系数 Service factor (fB)	机型号 Type	电机级数 Motor pole
0.55KW						0.75KW					
264	18	10.23	2.1	S-37	2P	10	460	134.40	1.15		
299	16	9.02	2.2	SA-F-37	2P	11	420	121.33	1.25		
338	14	8.00	2.5	SA-A-37	2P	13	375	106.75	1.40		
397	12	6.80	2.4	SA-A-F-37	2P	14	355	100.80	1.40	S-67	4P
0.75KW						16	305	85.83	1.70	SA-F-67	4P
1.1	4840	1223	0.85			18	310	75.06	1.55	SA-A-67	4P
1.3	4240	1070	1.00			21	275	65.63	1.75	SA-A-F-67	4P
1.5	3650	928	1.15	S97-RF57	4P	22	260	62.35	1.85		
1.7	3230	824	1.30	SF97-RF57	4P	25	230	54.70	2.1		
1.9	2300	714	1.85	SA97-RF57	4P	30	198	46.40	2.4		
2.2	2450	626	1.70	SAF97-RF57	4P	13	365	71.75	0.80		
2.6	2110	538	2.0			13	345	67.20	0.85	S-57	6P
2.8	1900	484	2.2			16	295	56.61	1.00	SA-F-57	6P
1.3	3030	1032	0.85			19	295	47.32	0.90	SA-A-57	6P
1.5	2780	930	0.90			20	275	44.22	1.00	SA-A-F-57	6P
1.7	2510	831	1.00	S87-RF57	4P	12	365	110.73	0.80		
1.9	2190	719	1.15	SF87-RF57	4P	15	315	94.08	0.95		
2.2	1920	624	1.30	SA87-RF57	4P	16	285	84.00	1.05		
2.5	1730	558	1.45	SAF87-RF57	4P	19	250	71.75	1.15		
3.2	1390	435	1.75			21	235	67.20	1.20		
4.3	1060	323	2.3			25	225	54.59	1.10		
4.2	1240	327	1.00	S77-RF37	4P	29	197	47.32	1.20	S-57	4P
4.8	1110	289	1.10	SF77-RF37	4P	31	185	44.22	1.35	SA-F-57	4P
5.5	960	250	1.30	SA77-RF37	4P	36	167	38.23	1.50	SA-A-57	4P
6.3	850	219	1.45	SAF77-RF37	4P	42	138	32.48	1.80	SA-A-F-57	4P
2.4	2040	286.40	2.1	S-97	8P	48	124	29.00	2.0		
2.6	1890	262.22	2.2	SA-F-97	8P	56	107	24.77	2.3		
3.0	1690	231.67	2.5	SA-A-97	8P	59	100	23.20	2.5		
3.1	1540	288.00	1.60	S-87	6P	68	93	20.33	1.80		
3.5	1400	258.18	1.75	SA-F-87	6P	78	81	17.62	2.1		
4.1	1220	222.40	1.95	SA-A-87	6P	84	76	16.47	2.2		
4.4	1120	202.96	2.1	SA-A-F-87	6P	97	66	14.24	2.6		
4.8	1050	288.00	2.2	S-87	4P	29	194	47.32	0.80		
5.3	950	258.18	2.4	SA-F-87	4P	31	182	44.22	0.85		
6.2	830	222.40	2.8	SA-A-87	4P	36	159	38.23	1.00		
6.8	765	202.96	3.0	SA-A-F-87	4P	42	136	32.48	1.15		
4.0	1160	225.26	1.10	S-77	6P	48	122	29.00	1.25		
4.2	1110	214.00	1.15	SA-F-77	6P	56	106	24.77	1.45		
4.8	990	189.09	1.30	SA-A-77	6P	59	99	23.20	1.55	S-47	4P
5.6	860	161.60	1.45	SA-A-F-77	6P	68	93	20.33	1.20	SA-F-47	4P
5.4	890	256.47	1.45			78	81	17.62	1.35	SA-A-47	4P
6.1	790	225.26	1.60	S-77	4P	84	76	16.47	1.45	SA-A-F-47	4P
6.4	755	214.00	1.70	SA-F-77	4P	97	66	14.24	1.65		
7.3	675	189.09	1.90	SA-A-77	4P	114	56	12.10	1.95		
8.5	585	161.60	2.2	SA-A-F-77	4P	128	50	10.80	2.2		
9.3	545	148.15	2.3			150	43	9.23	2.5		
11	480	130.00	2.5			160	41	8.64	2.7		
11	460	123.20	2.6			190	34	7.28	3.0		
13	405	107.83	2.9			72	81	19.13	0.85		
7.3	625	190.11	0.85	S-67	4P	111	57	12.48	0.85	S-37	4P
7.6	595	180.60	0.85	SA-F-67	4P	127	50	10.91	0.95	SA-F-37	4P
8.7	530	158.45	1.00	SA-A-67	4P	135	47	10.23	1.00	SA-A-37	4P
				SA-A-F-67	4P	153	42	9.02	1.10	SA-A-F-37	4P
						173	37	8.00	1.20		
						203	32	6.80	1.35		
						141	43	19.13	1.05		
						174	37	15.53	1.15		
						202	32	13.39	1.30	S-37	2P
						216	30	12.48	1.35	SA-F-37	2P
						248	26	10.91	1.50	SA-A-37	2P
						264	25	10.23	1.55	SA-A-F-37	2P
						299	22	9.02	1.65		
						338	19	8.00	1.80		
						397	17	6.80	1.75		

输出转速 Output speed (r/min)	输出扭矩 Output torque (N.M)	传动比 Ratio (i)	使用系数 Service factor (fB)	机型号 Type	电机级数 Motor pole	输出转速 Output speed (r/min)	输出扭矩 Output torque (N.M)	传动比 Ratio (i)	使用系数 Service factor (fB)	机型号 Type	电机级数 Motor pole
1.1KW						1.1KW					
1.7	4720	824	0.90			20	360	71.75	0.80		
2.0	3370	714	1.25	S97-RF57	4P	21	340	67.20	0.85		
2.2	3590	626	1.15	SF97-RF57	4P	25	290	56.61	0.90		
2.6	3090	538	1.35	SA97-RF57	4P	30	285	47.32	0.85		
2.9	2790	484	1.50	SAF97-RF57	4P	32	265	44.22	0.90		
3.3	2430	420	1.75			37	235	38.23	1.05		
						43	200	32.48	1.25	S-57	4P
2.2	2820	624	0.90			48	179	29.00	1.35	SA-F-57	4P
2.5	2550	558	1.00			57	154	24.77	1.60	SA-A-57	4P
2.9	2240	485	1.10			60	145	23.20	1.70	SA-A-F-57	4P
3.2	2040	435	1.20	S87-RF57	4P	72	123	19.45	1.75		
3.7	1790	378	1.35	SF87-RF57	4P	79	117	17.62	1.45		
4.3	1560	323	1.55	SA87-RF57	4P	85	110	16.47	1.55		
5.0	1370	281	1.75	SAF87-RF57	4P	98	95	14.24	1.75		
5.5	1460	255	1.35			116	82	12.10	2.1		
6.3	1280	222	1.55			130	73	10.80	2.3		
6.8	1200	205	1.65			152	63	9.23	2.7		
				S77-RF37	4P	48	177	29.00	0.90		
				SF77-RF37	4P	57	153	24.77	1.00		
				SA77-RF37	4P	60	143	23.20	1.05		
				SAF77-RF37	4P	72	122	19.54	1.20	S-47	4P
2.4	3030	286.40	1.40	S-97	8P	79	117	17.62	0.95	SA-F-47	4P
2.6	2800	262.22	1.50	SA-F-97	8P	85	109	16.47	1.00	SA-A-47	4P
2.9	2500	231.67	1.70	SA-A-97	8P	98	95	14.24	1.15	SA-A-F-47	4P
3.5	2160	196.52	1.95	SA-A-F-97	8P	116	81	12.10	1.35		
						130	73	10.80	1.50		
				S-97	6P	152	63	9.23	1.75		
3.2	2310	286.40	1.80	SA-F-97	6P	162	59	8.64	1.85		
3.5	2130	262.22	1.95	SA-A-97	6P	192	50	7.28	2.1		
4.0	1900	231.67	2.2	SA-A-F-97	6P						
3.2	2220	288.00	1.10	S-87	6P	175	54	8.00	0.85	S-37	4P
3.6	2010	258.18	1.20	SA-F-87	6P	206	46	6.80	0.95	SA-F-37	4P
4.1	1760	222.40	1.35	SA-A-87	6P					SA-A-37	4P
4.5	1620	202.96	1.45	SA-A-F-87	6P					SA-A-F-37	4P
4.9	1520	288.00	1.50			202	47	13.39	0.85		
5.4	1370	228.18	1.65	S-87	4P	216	44	12.48	0.90	S-37	2P
6.3	1200	222.40	1.90	SA-F-87	4P	248	39	10.91	1.00	SA-F-37	2P
6.9	1100	202.96	2.0	SA-A-87	4P	264	36	10.23	1.05	SA-A-37	2P
7.8	990	180.00	2.2	SA-A-F-87	4P	299	32	9.02	1.10	SA-A-F-37	2P
9.2	840	151.30	2.5			338	28	8.00	1.25		
						397	24	6.80	1.20		
1.5KW						1.5KW					
6.2	1150	225.26	1.10			2.0	4590	714	0.90		
6.5	1100	214.00	1.15			2.2	4890	626	0.85		
7.4	980	189.09	1.30			2.6	4220	538	1.00	S97-RF57	4P
8.7	850	161.60	1.50	S-77	4P	2.9	3810	484	1.10	SF97-RF57	4P
9.4	785	148.15	1.60	SA-F-77	4P	3.4	3310	420	1.25	SA97-RF57	4P
11	695	130.00	1.75	SA-A-77	4P	3.8	2990	376	1.40	SAF97-RF57	4P
11	665	123.20	1.80	SA-A-F-77	4P	4.3	2630	327	1.60		
13	585	107.83	2.0								
14	535	97.14	2.1			2.9	3060	485	0.80		
16	470	85.22	2.3			3.2	2780	435	0.90		
						3.7	2450	378	1.00	S87-RF57	4P
12	605	121.33	0.85			4.4	2130	323	1.15	SF87-RF57	4P
13	540	106.75	0.95			5.0	1870	281	1.30	SA87-RF57	4P
14	515	100.80	1.00			5.5	2000	255	1.00	SAF87-RF57	4P
16	445	85.83	1.15			6.3	1750	222	1.15		
18	405	78.00	1.30	S-67	4P	6.9	1630	205	1.20		
21	400	65.63	1.20	SA-F-67	4P						
22	380	62.35	1.25	SA-A-67	4P	2.4	4030	286.40	1.05	S-97	8P
26	335	54.70	1.45	SA-A-F-67	4P	2.7	3720	262.22	1.15	SA-F-97	8P
30	285	46.40	1.65			3.0	3330	231.67	1.25	SA-A-97	8P
33	260	41.89	1.85			3.6	2870	196.52	1.45	SA-A-F-97	8P
38	230	36.85	2.1								
40	220	34.80	2.2								
47	187	29.63	2.6								





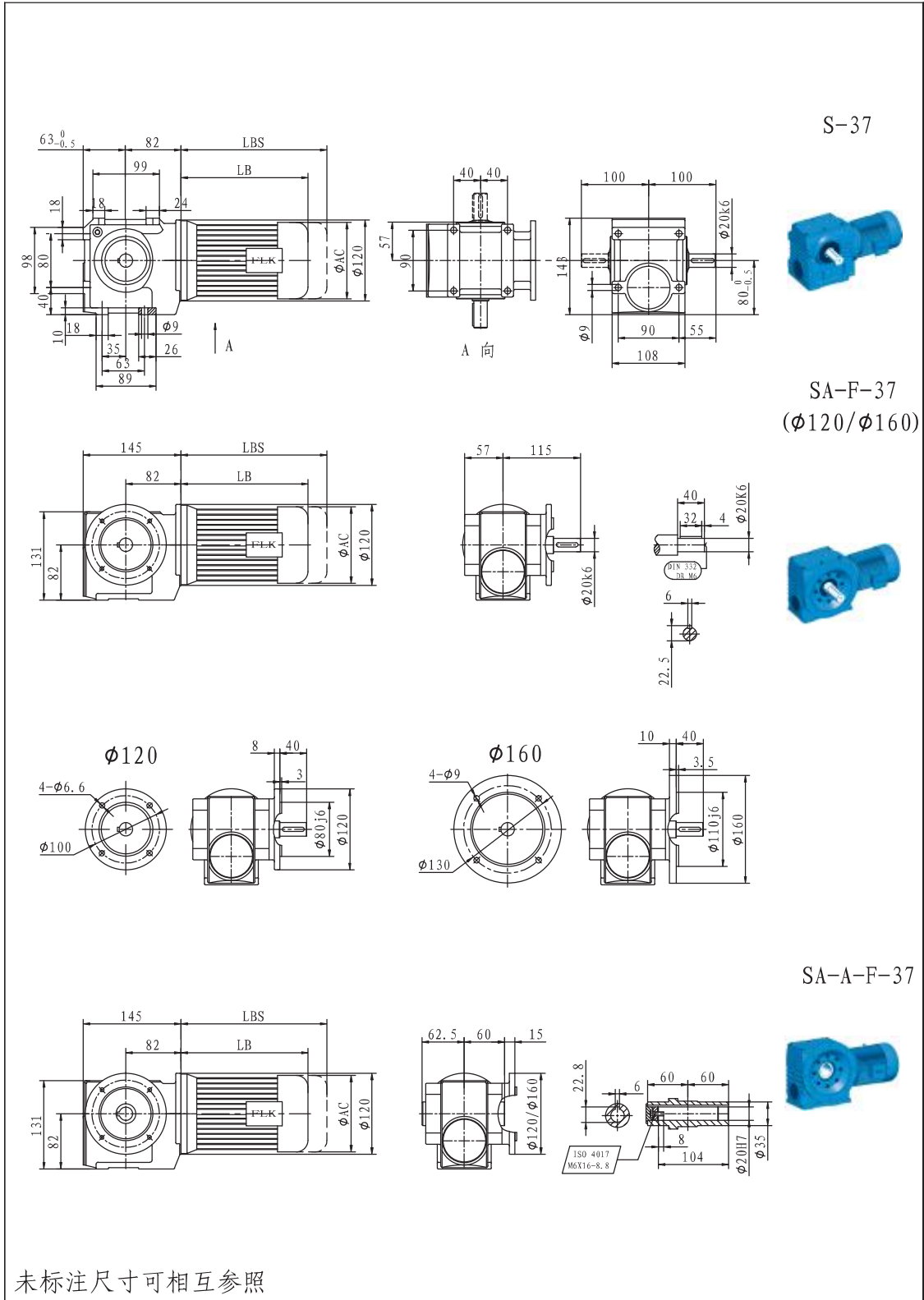
输出转速 Output speed (r/min)	输出扭矩 Output torque (N.M)	传动比 Ratio (i)	使用系数 Service factor (fB)	机型号 Type	电机级数 Motor pole	输出转速 Output speed (r/min)	输出扭矩 Output torque (N.M)	传动比 Ratio (i)	使用系数 Service factor (fB)	机型号 Type	电机级数 Motor pole
1.5KW						1.5KW					
3.2	3150	286.40	1.35	S-97	6P	99	129	14.24	1.30	S-57	4P
3.5	2910	262.22	1.45	SA-F-97	6P	117	110	12.10	1.55	SA-F-57	4P
4.0	2600	231.67	1.60	SA-A-97	6P	131	99	10.80	1.70	SA-A-57	4P
4.7	2230	196.52	1.90	SA-A-F-97	6P	153	85	9.23	2.0	SA-A-F-57	4P
4.9	2130	286.40	1.90	S-97	4P	99	129	14.24	0.85		
5.4	1970	262.22	2.0	SA-F-97	4P	117	110	12.10	1.00	S-47	4P
6.1	1760	231.67	2.3	SA-A-97	4P	131	99	10.80	1.10	SA-F-47	4P
7.2	1510	196.52	2.7	SA-A-F-97	4P	153	85	9.23	1.30	SA-A-47	4P
3.6	2740	258.18	0.90	S-87	6P	163	79	8.64	1.35	SA-A-F-47	4P
4.1	2390	222.40	1.00	SA-F-87	6P	194	67	7.28	1.55		
4.5	2200	202.96	1.10	SA-A-87	6P	299	44	9.02	0.85	S-37	2P
5.1	1980	180.00	1.20	SA-A-F-87	6P	338	39	8.00	0.90	SA-F-37	2P
4.9	2060	288.00	1.10			397	33	6.80	0.90	SA-A-37	2P
5.5	1860	258.18	1.20							SA-A-F-37	2P
6.3	1630	222.40	1.40			2.2KW					
6.9	1500	202.96	1.50	S-87	4P	3.4	4900	420	0.85	S97-RF57	4P
7.8	1340	180.00	1.65	SA-F-87	4P	3.8	4410	376	0.95	SF97-RF57	4P
9.3	1140	151.30	1.90	SA-A-87	4P	4.3	3870	327	1.10	SA97-RF57	4P
10	1060	139.05	2.0	SA-A-F-87	4P	4.9	3420	287	1.25	SAF97-RF57	4P
11	950	123.48	2.2			5.6	3000	252	1.40		
13	850	110.40	2.3			3.3	4530	286.40	0.95	S-97	6P
14	770	99.26	2.5			3.6	4180	262.22	1.00	SA-F-97	6P
7.5	1330	189.09	0.95			4.1	3730	231.67	1.15	S-A-97	6P
8.7	1150	161.60	1.10			4.8	3210	196.52	1.30	SA-A-F-97	6P
9.5	1060	148.15	1.15			4.9	3130	286.40	1.30		
11	940	130.00	1.30			5.4	2890	262.22	1.40		
11	900	123.20	1.35			6.1	2570	231.67	1.55		
13	795	107.83	1.45	S-77	4P	7.2	2210	196.52	1.80	S-97	4P
15	725	97.14	1.60	SA-F-77	4P	7.8	2050	180.95	1.90	SA-F-97	4P
17	640	85.22	1.70	SA-A-77	4P	8.7	1840	161.74	2.1	SA-A-97	4P
19	650	75.09	1.70	SA-A-F-77	4P	9.7	1670	145.60	2.2	SA-A-F-97	4P
20	620	71.33	1.80			11	1520	131.85	2.4		
21	510	66.67	2.0			12	1360	116.92	2.6		
22	550	63.03	2.0			13	1240	105.71	2.8		
25	440	56.92	2.3			16	1060	89.60	3.1		
26	470	53.87	2.3			5.5	2730	258.18	0.85		
29	435	49.38	2.5			6.3	2380	222.40	0.95		
33	385	43.33	2.9			6.9	2190	202.96	1.05		
16	600	85.83	0.85			7.8	1970	180.00	1.10		
18	550	78.00	0.95			9.3	1680	151.30	1.30	S-87	4P
21	540	65.63	0.90			10	1550	139.05	1.35	SA-F-87	4P
23	515	62.35	1.95			11	1390	123.48	1.50	SA-A-87	4P
26	455	54.70	1.05			13	1250	110.40	1.60	SA-A-F-87	4P
30	390	46.40	1.25			14	1130	99.26	1.75		
34	355	41.89	1.36	S-67	4P	16	1030	86.15	1.90		
38	310	36.85	1.55	SA-F-67	4P	17	990	81.76	1.50		
41	295	34.80	1.60	SA-A-67	4P	18	890	77.14	2.0		
48	255	29.63	1.90	SA-A-F-67	4P	20	920	70.43	1.75		
52	230	26.93	2.1			22	840	64.27	1.90		
58	220	24.44	1.55			25	750	57.00	2.1		
61	210	23.22	1.60			11	1390	130.00	0.85		
69	186	20.37	1.85			11	1320	123.20	0.90		
82	159	17.28	2.1			13	1170	107.83	1.00		
90	144	15.60	2.4			15	1060	97.14	1.10		
103	127	13.73	2.7			17	940	85.22	1.15	S-77	4P
43	270	32.48	0.90			19	840	75.20	1.30	SA-F-77	4P
49	245	29.00	1.00	S-57	4P	21	745	66.67	1.40	SA-A-77	4P
57	210	24.77	1.15	SA-F-57	4P	22	810	63.03	1.35	SA-A-F-77	4P
61	196	23.20	1.25	SA-A-57	4P	25	645	56.92	1.55		
72	167	19.54	1.30	SA-A-F-57	4P	26	695	53.87	1.60		
80	159	17.62	1.05			29	635	49.38	1.75		
86	149	16.47	1.15			33	560	43.33	1.95		
						34	535	41.07	2.1		

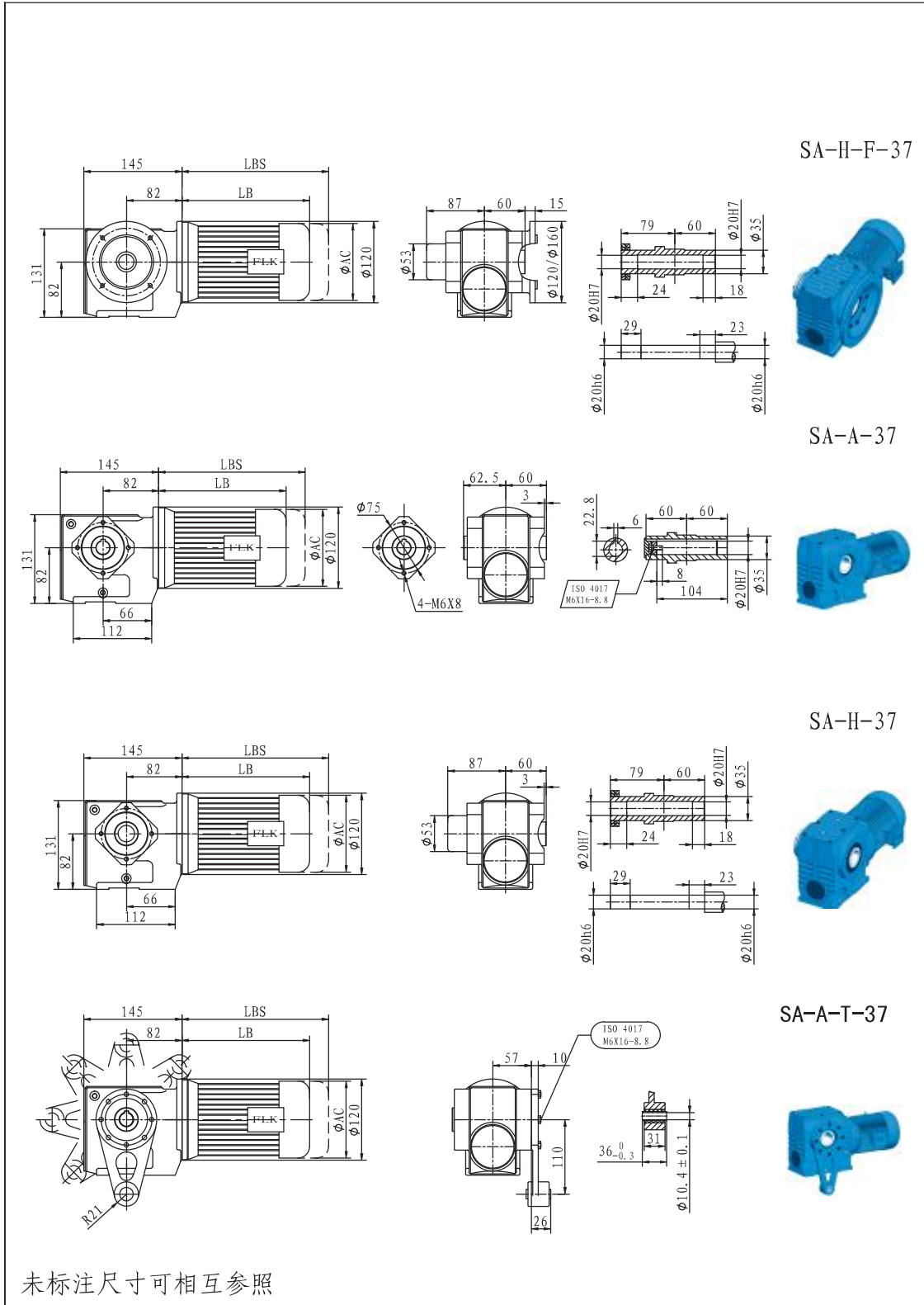


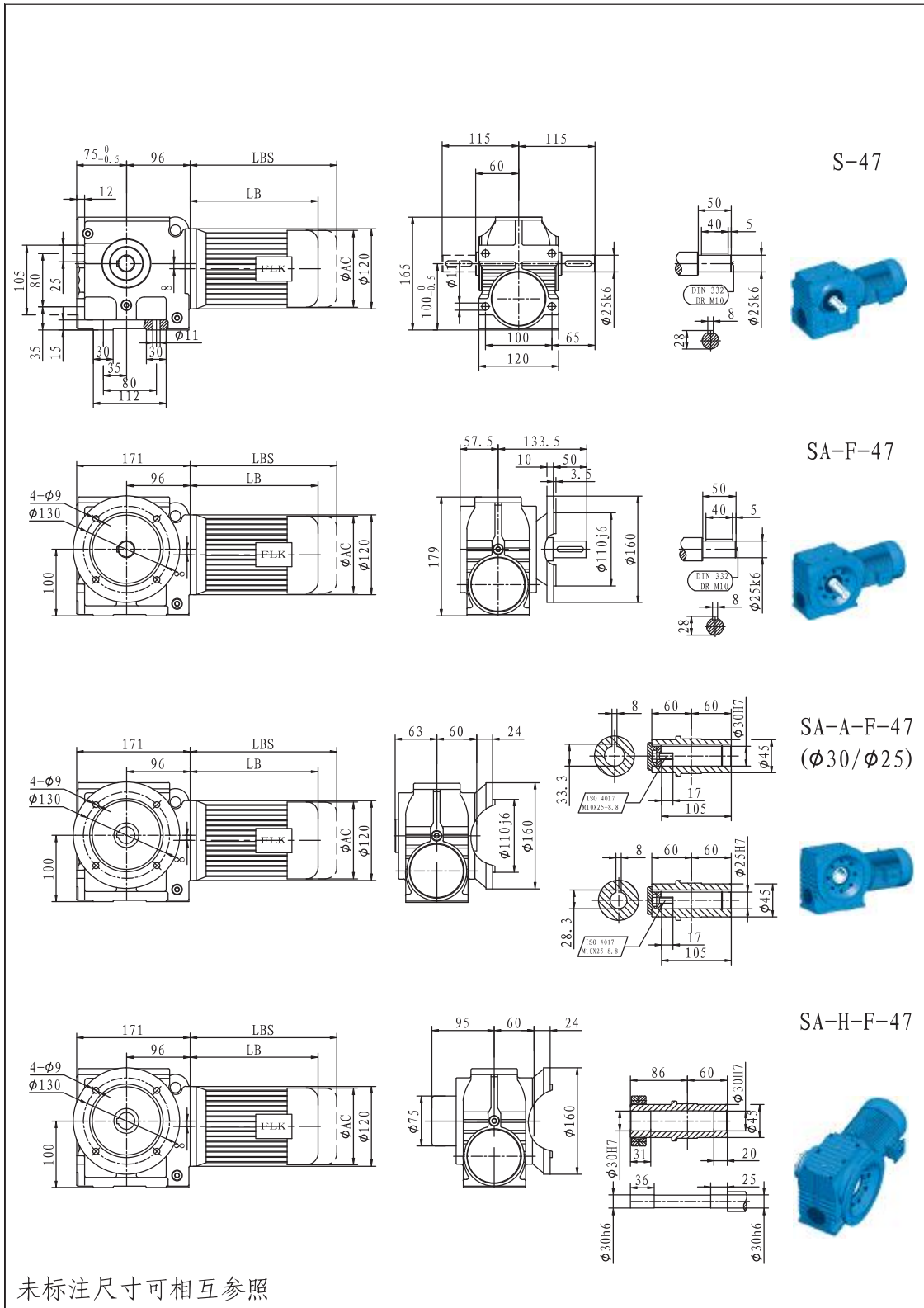
输出转速 Output speed (r/min)	输出扭矩 Output torque (N.M)	传动比 Ratio (i)	使用系数 Service factor (fB)	机型号 Type	电机级数 Motor pole	输出转速 Output speed (r/min)	输出扭矩 Output torque (N.M)	传动比 Ratio (i)	使用系数 Service factor (fB)	机型号 Type	电机级数 Motor pole																		
4.0KW						5.5KW																							
32	1060	44.03	1.05			35	1320	41.07	0.85																				
36	940	39.10	1.70	S-87	4P	40	1160	35.94	0.95																				
41	840	34.96	1.90	SA-F-87	4P	44	1050	32.38	1.05																				
45	760	31.43	2.1	SA-A-87	4P	50	920	28.41	1.15																				
52	665	27.28	2.4	SA-A-F-87	4P	57	820	25.07	1.25																				
56	635	25.50	1.95			64	125	22.22	1.35	S-77	4P																		
5.5KW 25 1160 56.92 0.85 26 1250 53.87 0.90 29 1150 49.38 0.95 33 1020 43.33 1.10 35 960 41.07 1.15 40 850 35.94 1.30 44 765 32.38 1.40 50 675 28.41 1.55 57 600 25.07 1.70 62 565 22.89 1.25 68 520 20.99 1.35 77 455 18.42 1.55 81 435 17.45 1.65 93 380 15.28 1.85 103 345 13.76 2.1 118 300 12.07 2.4 133 265 10.65 2.7 150 235 9.44 3.1 176 205 8.06 3.3						5.5KW 78 625 18.41 1.15 82 590 17.45 1.20 94 520 15.28 1.35 104 470 13.76 1.50 118 410 12.07 1.75 134 365 10.65 2.0 151 325 9.44 2.2 177 275 8.06 2.5 130 370 11.03 0.90 143 340 10.03 1.00 165 295 8.69 1.15 189 255 7.56 1.15 S-67 4P SA-F-67 4P SA-A-67 4P SA-A-F-67 4P																							
												82	420	17.28	0.80			7.5KW 14 4160 105.71 0.85 16 3560 89.60 0.90 18 3130 78.26 1.00 20 3200 71.43 1.05 22 2630 65.45 1.10 24 2730 60.59 1.20 26 2520 55.79 1.30 29 2260 49.87 1.45 32 2040 44.89 1.60 35 1850 40.65 1.80 40 1650 36.05 2.0 44 1490 32.60 2.2 54 1240 26.39 2.1 61 1110 23.59 2.3 67 1000 21.23 2.6 74 910 19.23 2.9 S-97 4P SA-F-97 4P SA-A-97 4P SA-A-F-97 4P											
												91	380	15.60	0.90														
												103	335	13.73	1.00	S-67	4P												
												110	320	12.96	1.05	SA-F-67	4P												
												129	270	11.03	1.25	SA-A-67	4P												
												142	245	10.03	1.35	SA-A-F-67	4P												
												163	215	8.69	1.55														
												188	188	7.56	1.55														
												5.5KW												5.5KW					
												8.8	4550	161.74	0.85									32	1970	44.03	0.80		
												9.8	4130	145.60	0.90									37	1750	39.10	0.90		
												11	3760	131.85	0.95									41	1570	34.96	1.00		
												12	3360	116.92	1.05									45	1420	31.43	1.15		
14	3050	105.71	1.15	S-97	4P	52	1230	27.28	1.30	S-87	4P																		
16	2610	89.60	1.25	SA-F-97	4P	56	1180	25.50	1.05	SA-F-87	4P																		
18	2290	78.26	1.35	SA-A-97	4P	67	1000	21.43	1.25	SA-A-87	4P																		
20	2350	71.43	1.40	SA-A-F-97	4P	73	920	19.70	1.35	SA-A-F-87	4P																		
22	1930	65.45	1.50			82	820	17.49	1.50																				
24	2000	60.59	1.65			91	730	15.64	1.70																				
26	1850	55.79	1.80			102	660	14.06	1.90																				
29	1660	49.87	2.0			117	676	12.21	2.2																				
32	1500	44.89	2.2			131	616	10.93	2.4																				
35	1360	40.65	2.4			158	430	9.07	2.7																				
5.5KW 19 2200 77.14 0.85 22 1850 64.00 0.90 25 1850 57.00 1.85 30 1560 47.91 1.00 32 1440 44.03 1.10 37 1280 39.10 1.25 41 1150 34.96 1.40 45 1040 31.43 1.55 52 910 27.28 1.75 56 870 25.50 1.45 67 730 21.43 1.70 73 675 19.70 1.85 82 600 17.49 2.1 91 535 15.64 2.3 102 485 14.06 2.6 117 420 12.21 3.0 131 375 10.93 3.3 S-87 4P SA-F-87 4P SA-A-87 4P SA-A-F-87 4P						5.5KW 181 375 7.88 2.7 50 1260 28.41 0.85 57 1110 25.07 0.90 64 990 22.22 1.00 78 850 18.42 0.85 82 810 17.45 0.90 94 705 15.28 1.00 104 640 13.76 1.10 118 650 12.07 1.30 134 495 10.65 1.45 151 440 9.44 1.65 177 380 8.06 1.80 S-77 4P SA-F-77 4P SA-A-77 4P SA-A-F-77 4P																							
												19	2200	77.14	0.85														
												22	1850	64.00	0.90														
												25	1850	57.00	1.85														
												30	1560	47.91	1.00														
												32	1440	44.03	1.10														
												37	1280	39.10	1.25	S-87	4P												
												41	1150	34.96	1.40	SA-F-87	4P												
												45	1040	31.43	1.55	SA-A-87	4P												
												52	910	27.28	1.75	SA-A-F-87	4P												
												56	870	25.50	1.45														
												67	730	21.43	1.70														
												73	675	19.70	1.85														
												82	600	17.49	2.1														
91	535	15.64	2.3																										
102	485	14.06	2.6																										
117	420	12.21	3.0																										
131	375	10.93	3.3																										

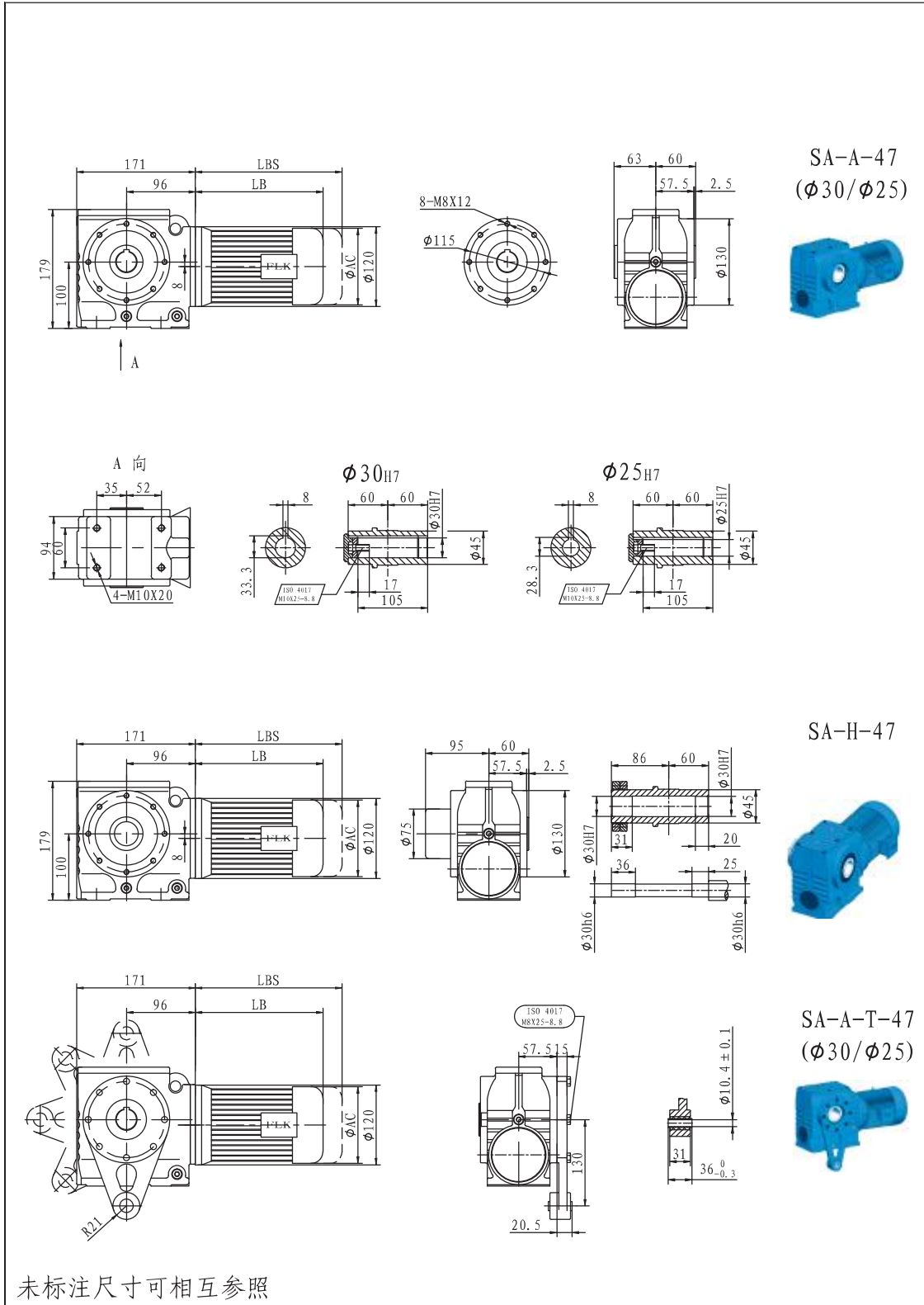
输出转速 Output speed (r/min)	输出扭矩 Output torque (N.M)	传动比 Ratio (i)	使用系数 Service factor (fB)	机型号 Type	电机级数 Motor pole	输出转速 Output speed (r/min)	输出扭矩 Output torque (N.M)	传动比 Ratio (i)	使用系数 Service factor (fB)	机型号 Type	电机级数 Motor pole
11.0KW						22KW					
26	3670	55.79	0.90			53	3630	27.63	0.85		
29	3290	49.87	1.00			61	3180	24.13	0.90		
32	2970	44.89	1.10			69	2870	21.23	0.90		
35	2700	40.65	1.20			76	2600	19.23	1.00	S-97	4P
40	3400	36.05	1.40	S-97	4P	86	2310	17.05	1.10	SA-F-97	4P
44	2170	32.60	1.45	SA-S-97	4P	95	2090	15.42	1.20	SA-A-97	4P
55	1810	26.39	1.45	SA-A-97	4P	112	1780	13.07	1.30	SA-A-F-97	4P
61	1620	23.59	1.60	SA-A-F-97	4P	128	1560	11.41	1.40		
68	1460	21.23	1.80			153	1300	9.55	1.55		
75	1320	19.23	1.95			177	1130	8.26	1.55		
84	1180	17.05	2.2								
93	1070	15.42	2.3								
110	900	13.07	2.6								
126	790	11.41	2.8								
53	1800	27.28	0.90								
59	1610	24.43	1.00								
71	1340	20.27	1.20								
73	1340	19.70	0.95								
82	1190	17.49	1.05	S-87	4P						
92	1070	15.64	1.15	SA-F-87	4P						
102	960	14.06	1.30	SA-A-87	4P						
118	840	12.21	1.50	SA-A-F-87	4P						
132	750	10.93	1.65								
159	625	9.07	1.85								
183	545	7.88	1.85								
15.0KW											
33	4000	44.89	0.85								
36	3630	40.65	0.90								
41	3230	36.05	1.00								
45	2920	32.60	1.10								
55	2430	26.39	1.05								
62	2180	23.59	1.20	S-97	4P						
65	1970	21.23	1.30	SA-F-97	4P						
76	1780	19.23	1.45	SA-A-97	4P						
86	1580	17.05	1.60	SA-A-F-97	4P						
95	1430	15.42	1.70								
112	1220	1.307	1.90								
128	1030	11.41	2.1								
153	890	9.55	2.3								
177	775	8.26	2.3								
93	1430	15.64	0.85								
104	1290	14.06	0.95	S-87	4P						
120	1120	12.21	1.10	SA-F-87	4P						
134	1010	10.93	1.25	SA-A-87	4P						
161	840	9.07	1.35	SA-A-F-87	4P						
185	730	7.88	1.40								
18.5KW											
41	3970	36.05	0.85								
45	3590	32.60	0.90								
53	3060	27.63	1.00								
61	2680	24.13	1.05	S-97	4P						
69	2420	21.23	1.10	SA-F-97	4P						
76	2190	19.23	1.20	SA-A-97	4P						
86	1950	17.05	1.30	SA-A-F-97	4P						
95	1760	15.42	1.40								
112	1500	13.07	1.55								
128	1310	11.41	1.70								
153	1100	9.55	1.85								
177	950	8.26	1.85								

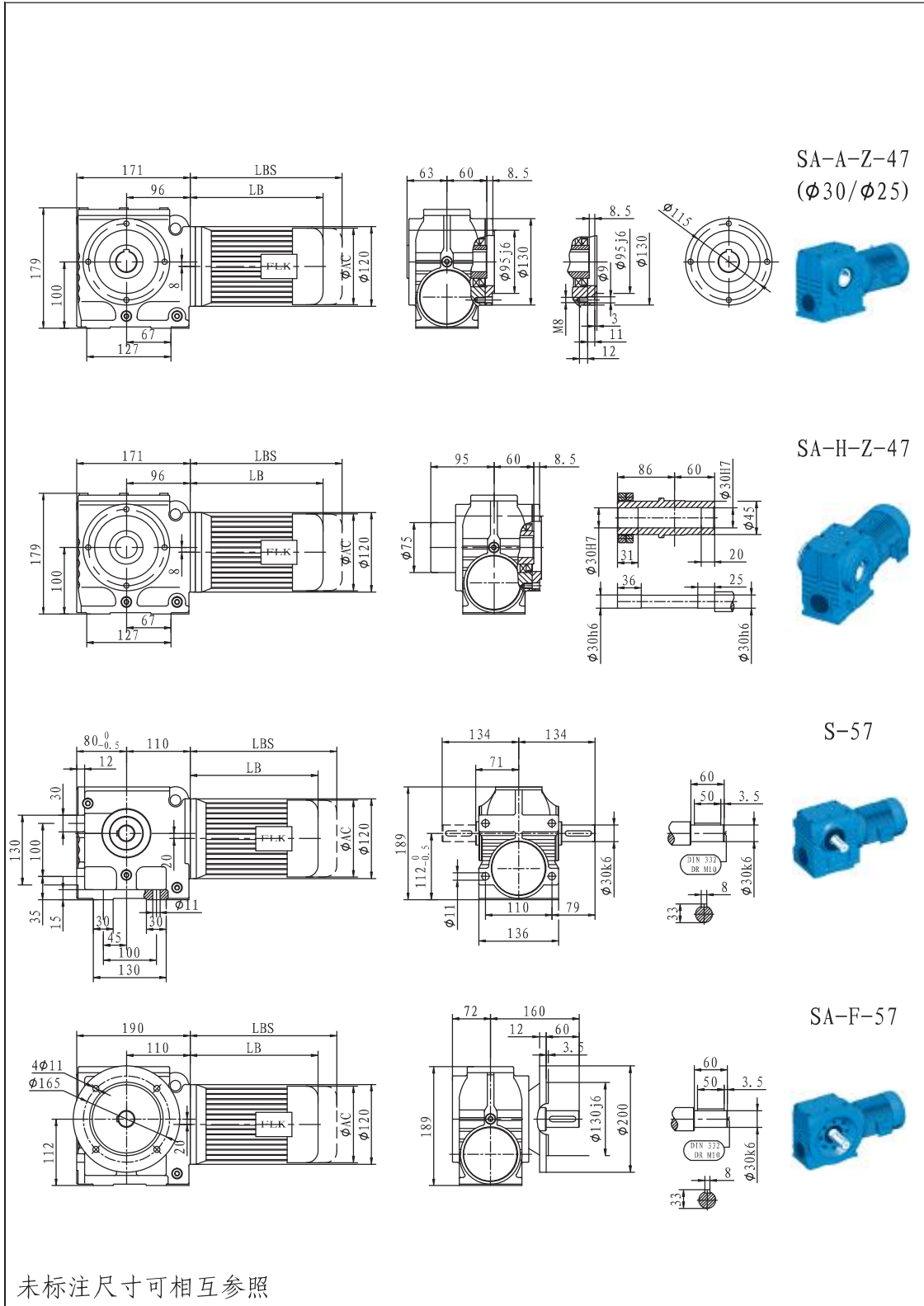


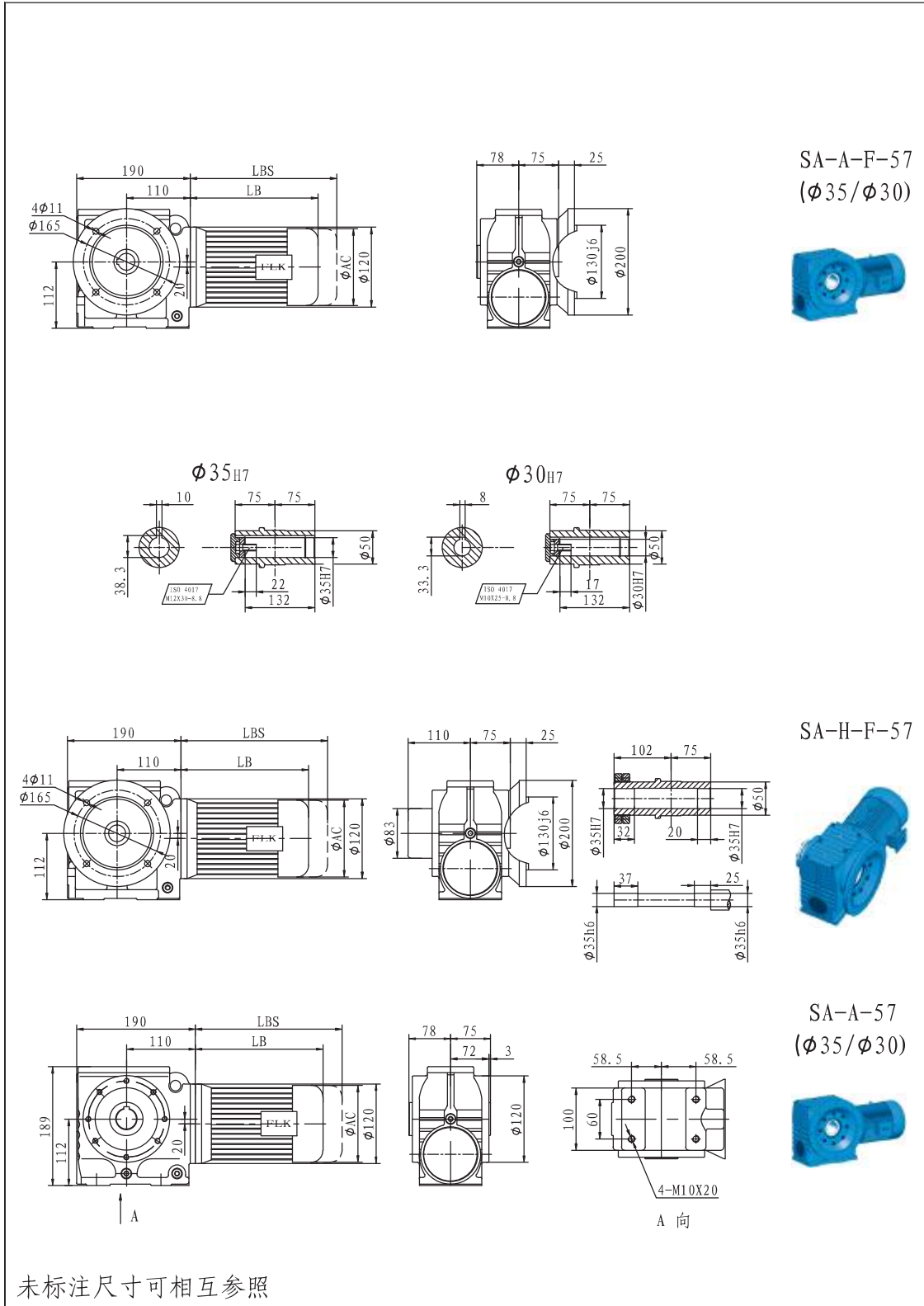


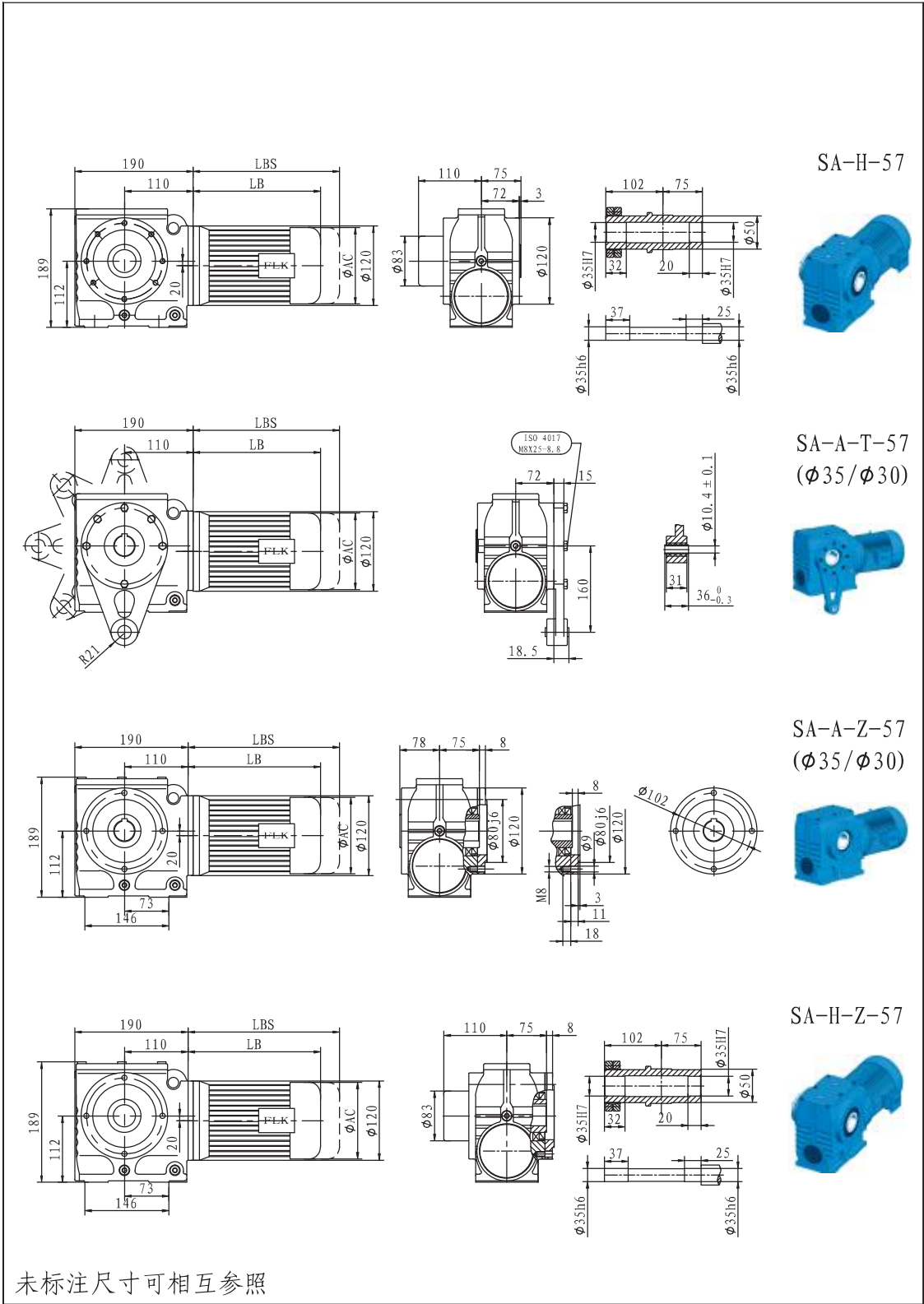




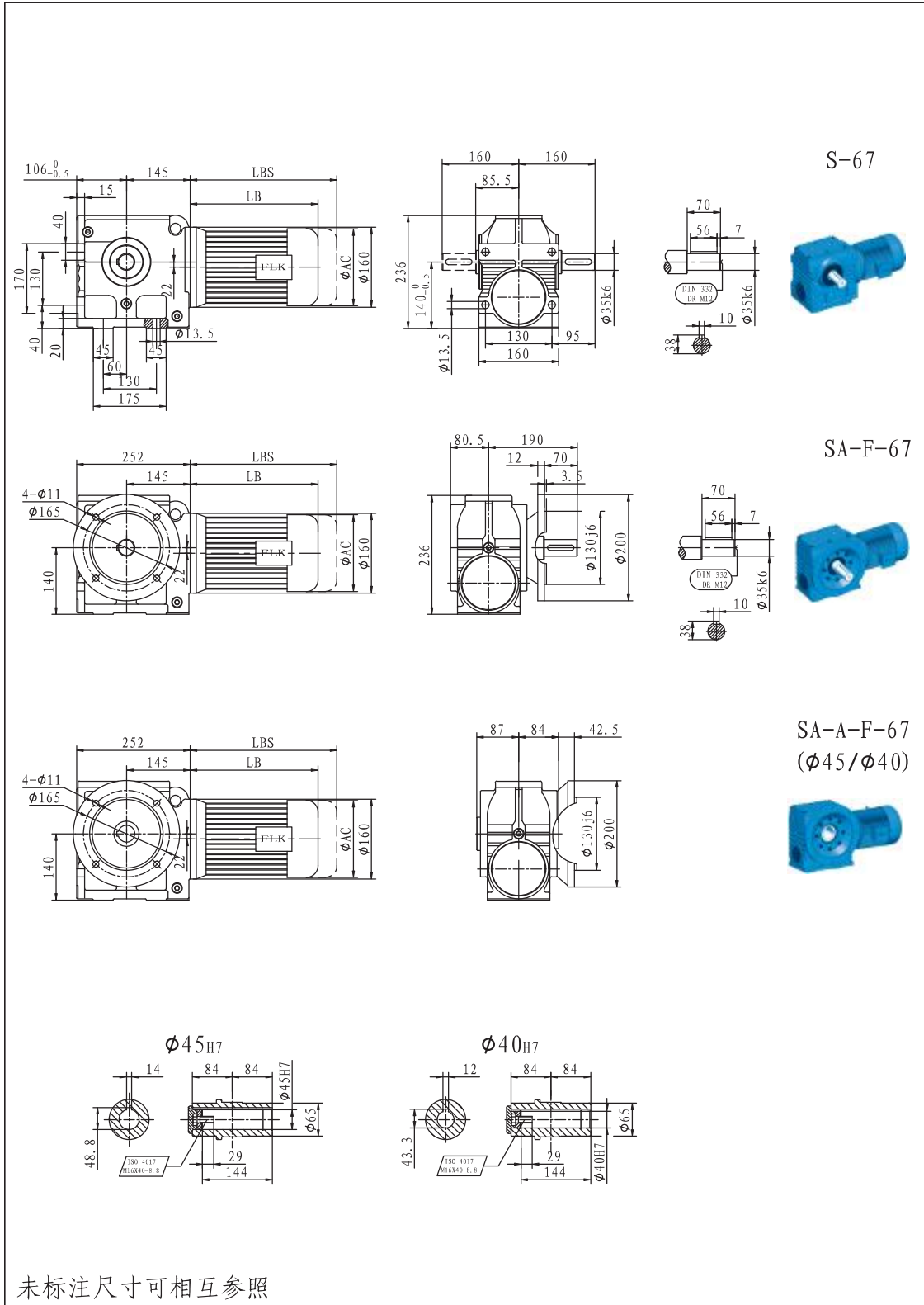


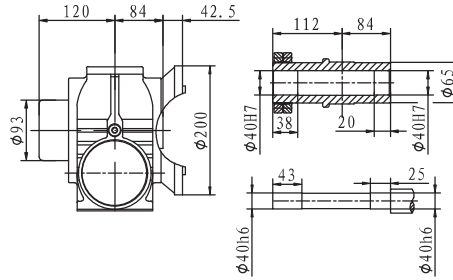
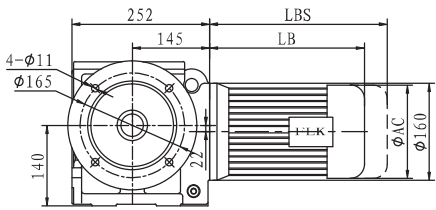




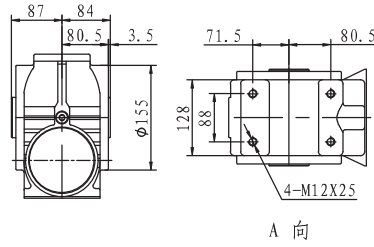
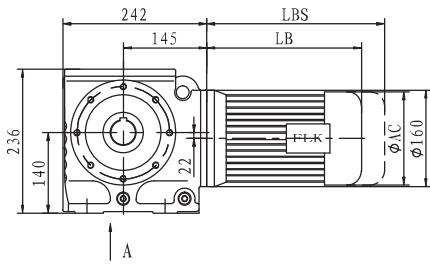


未标注尺寸可相互参照

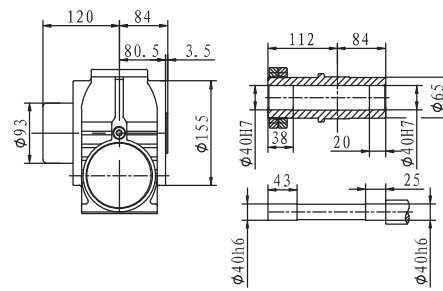
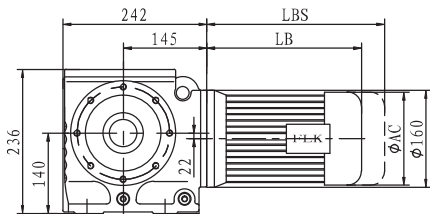




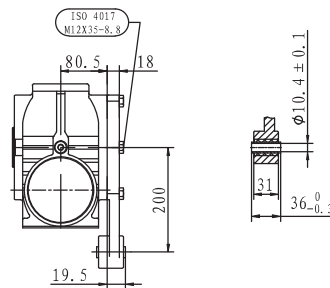
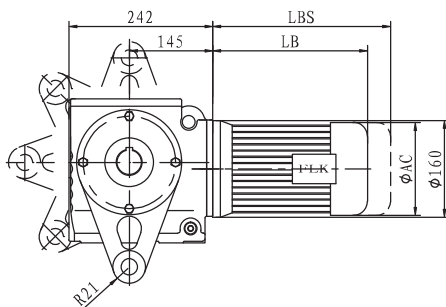
SA-H-F-67



SA-A-67
(φ45/φ40)



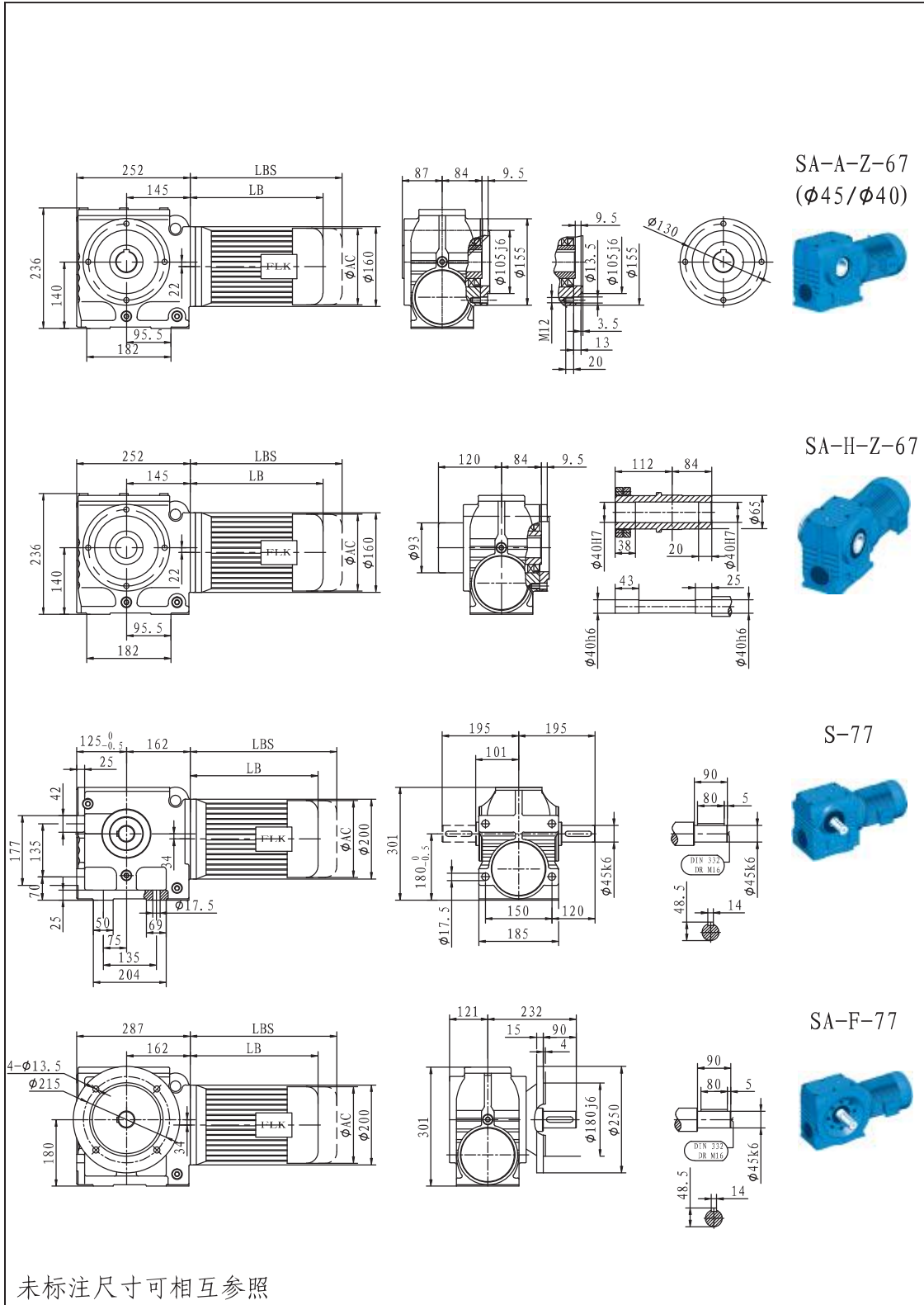
SA-H-67

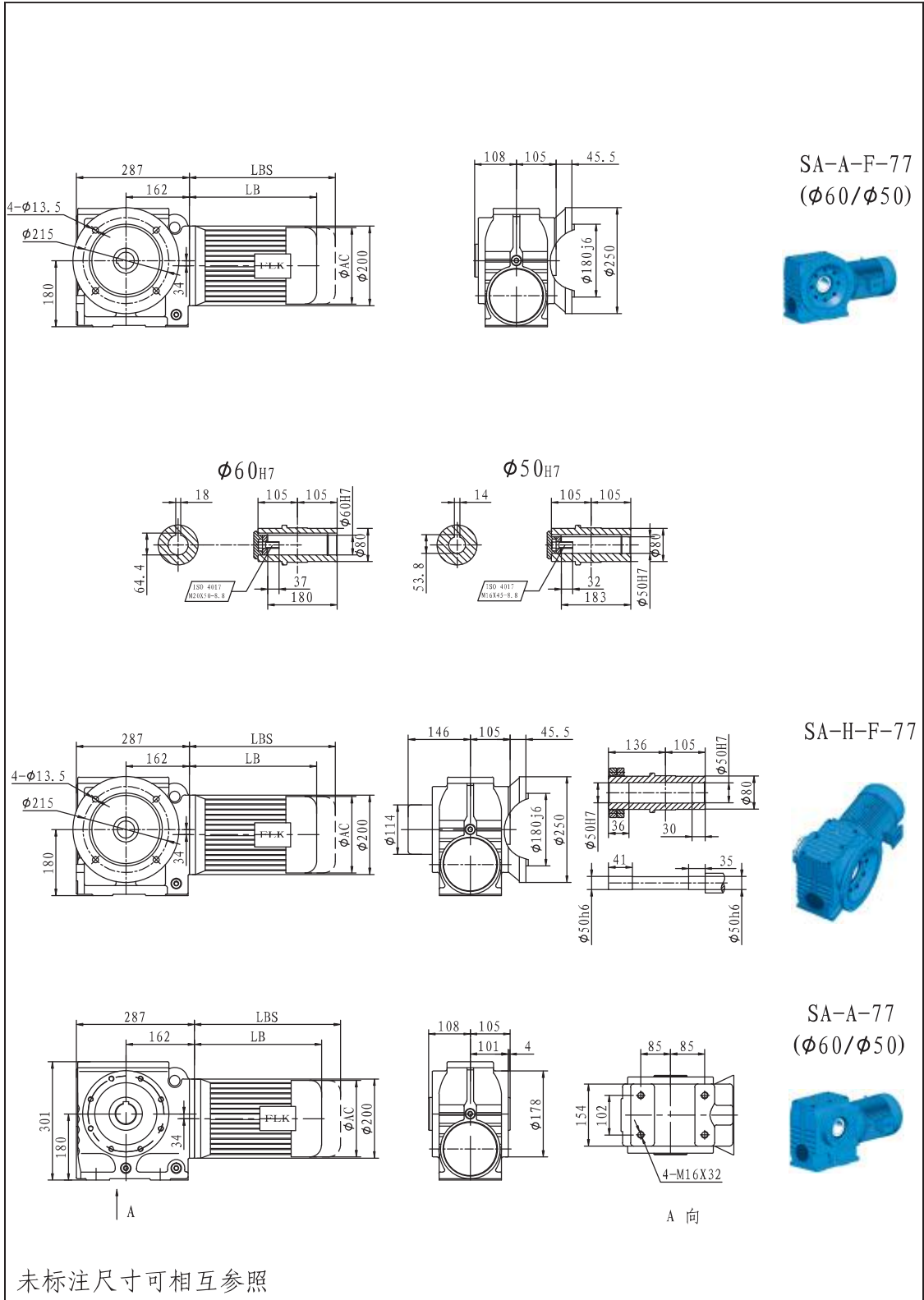


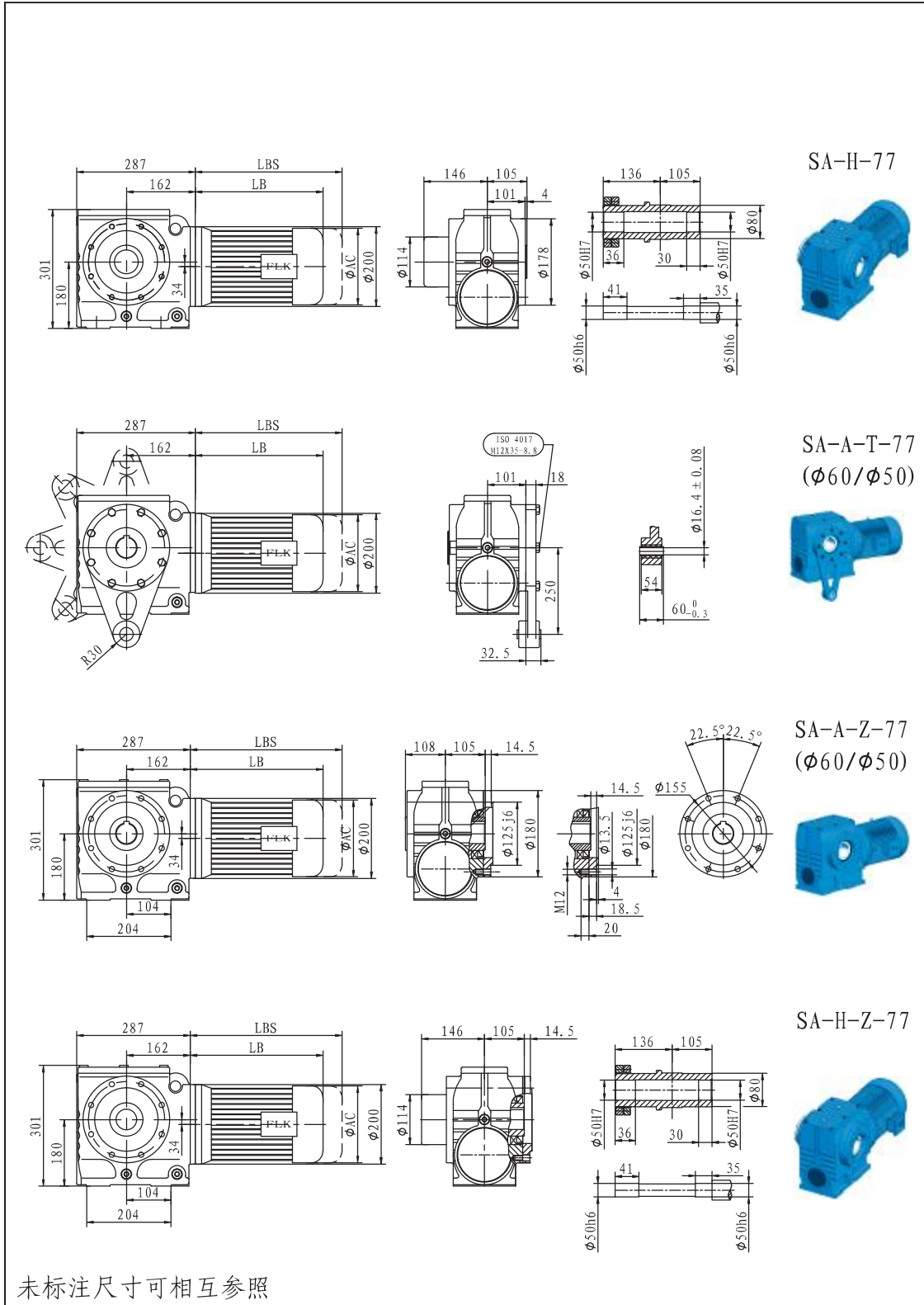
SA-A-T-67
(φ45/φ40)

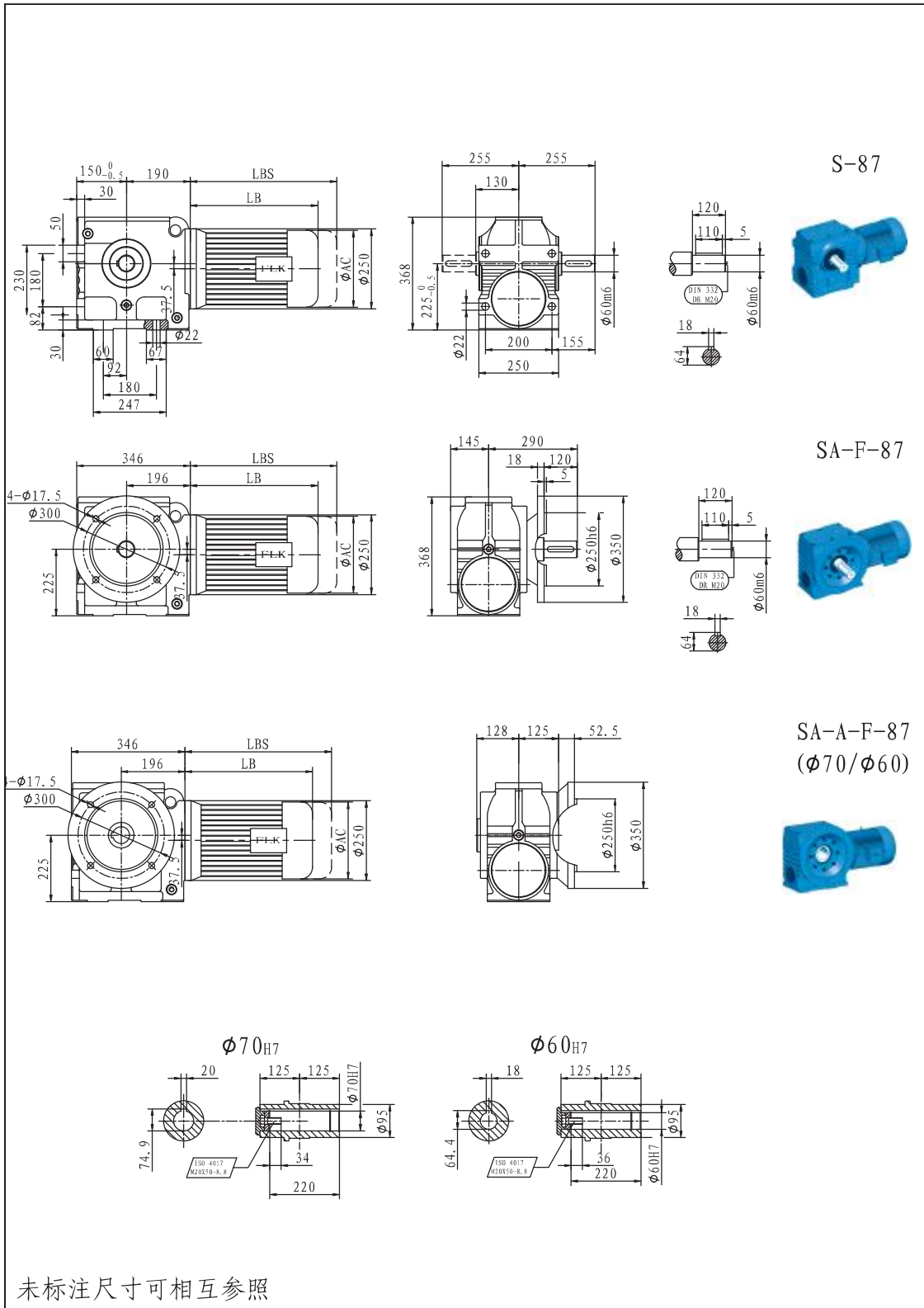


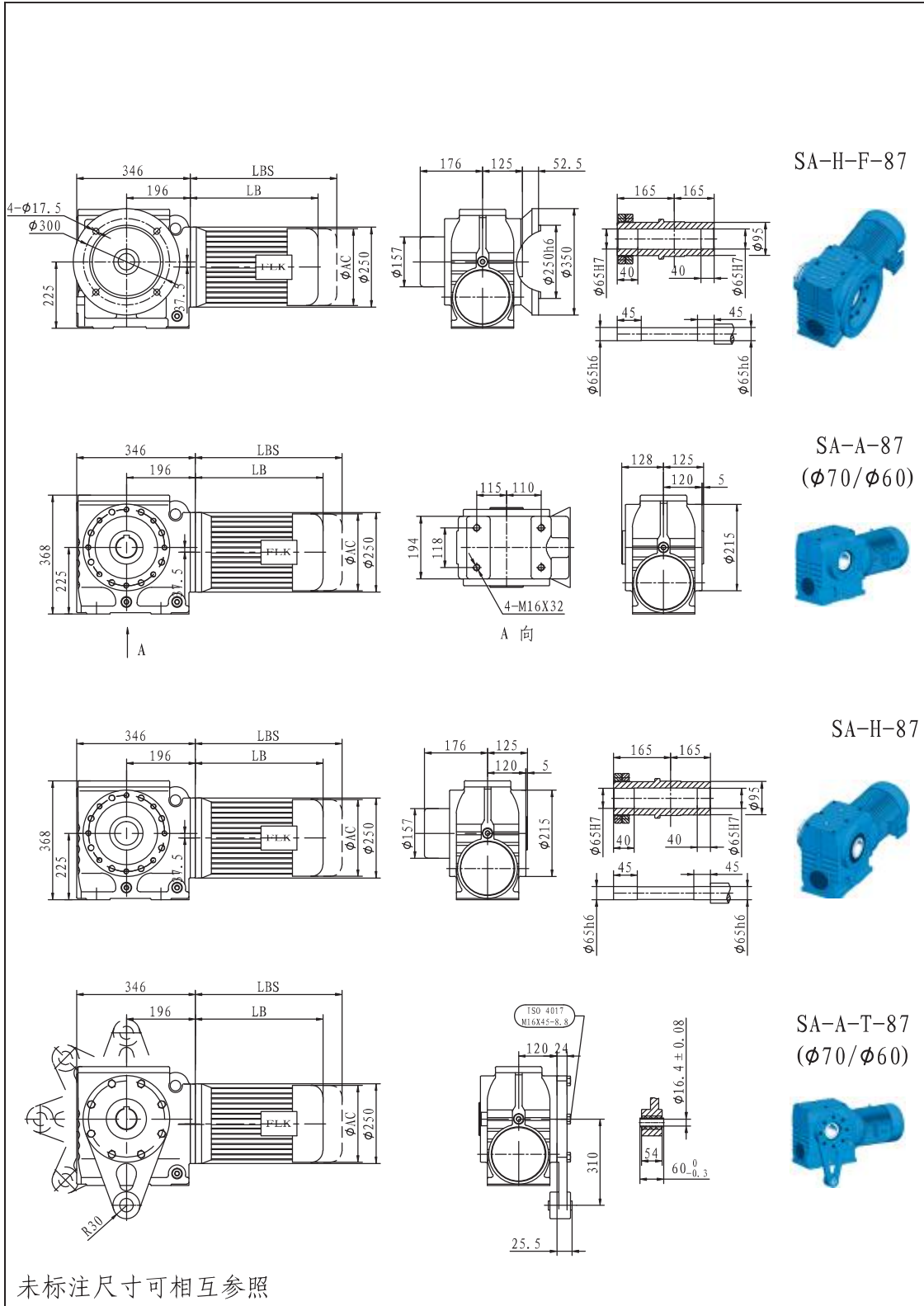
未标注尺寸可相互参照

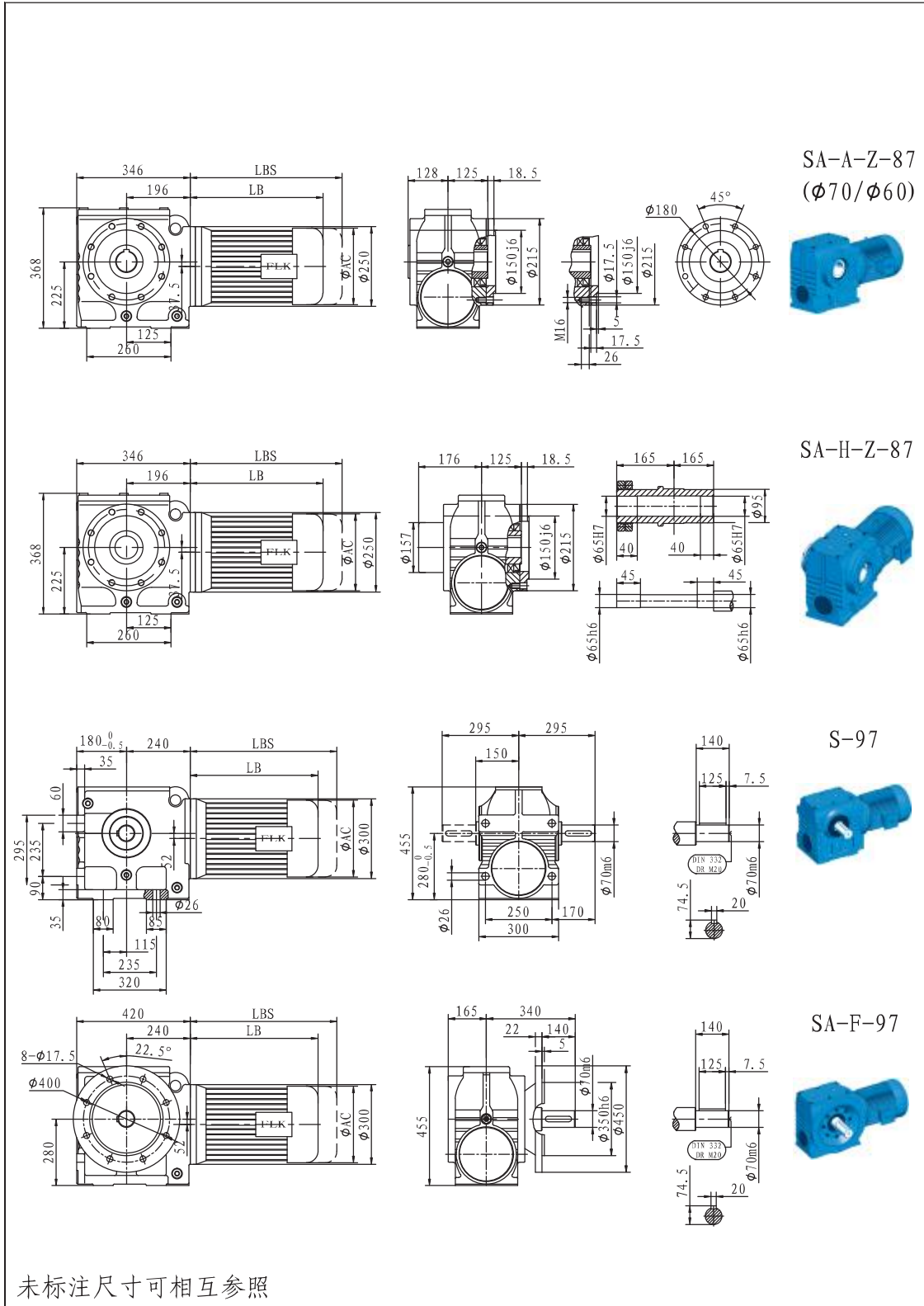


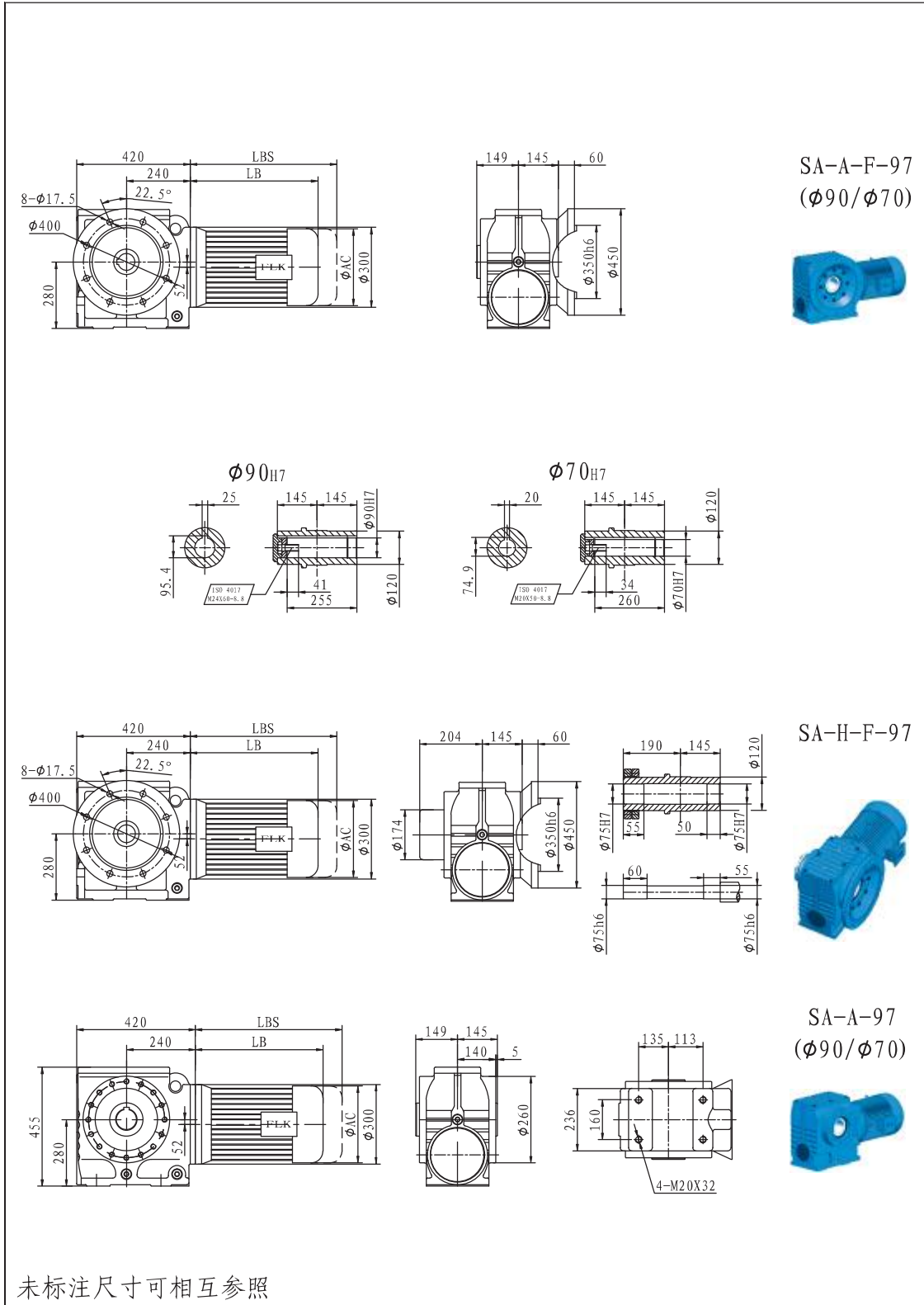


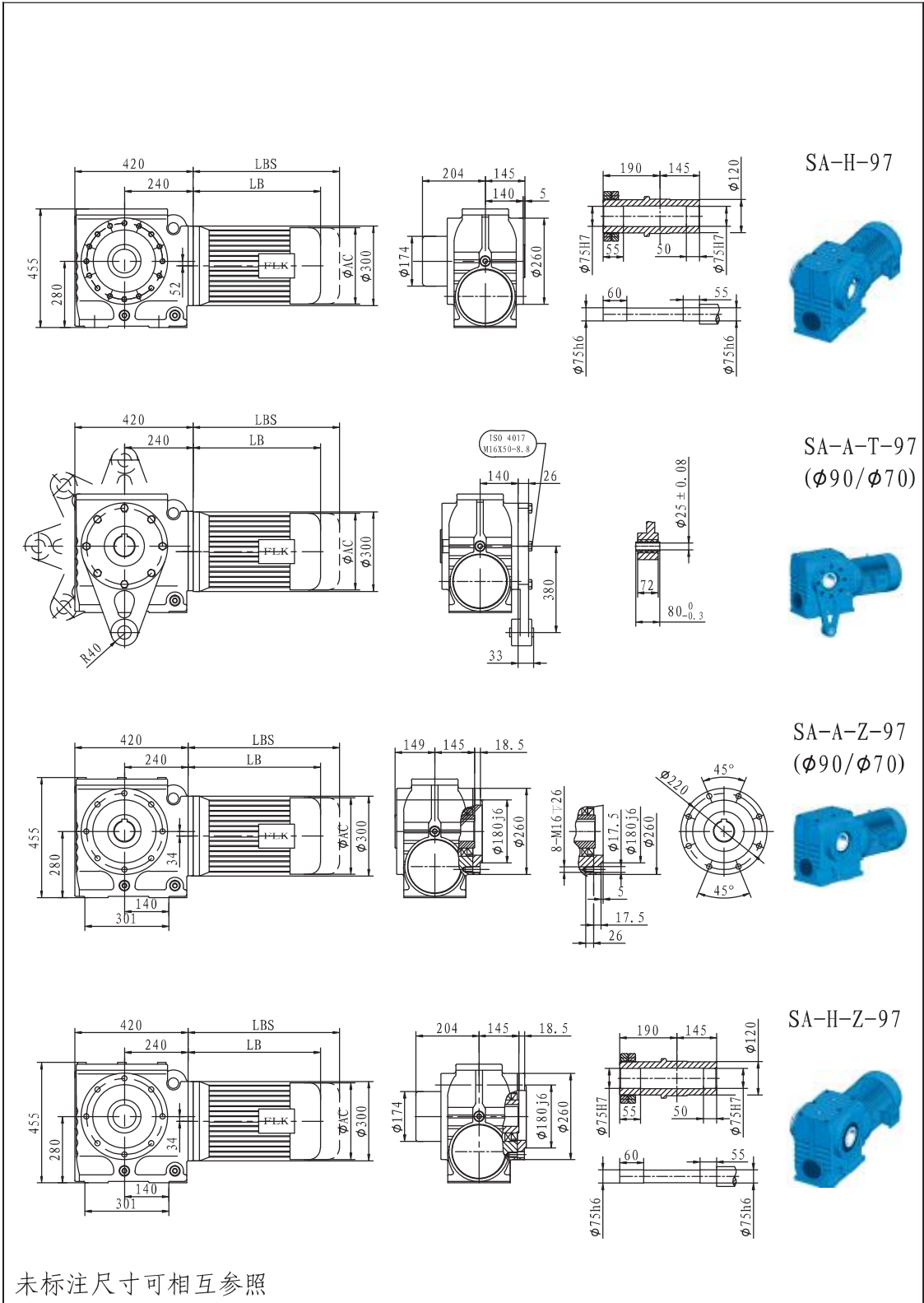








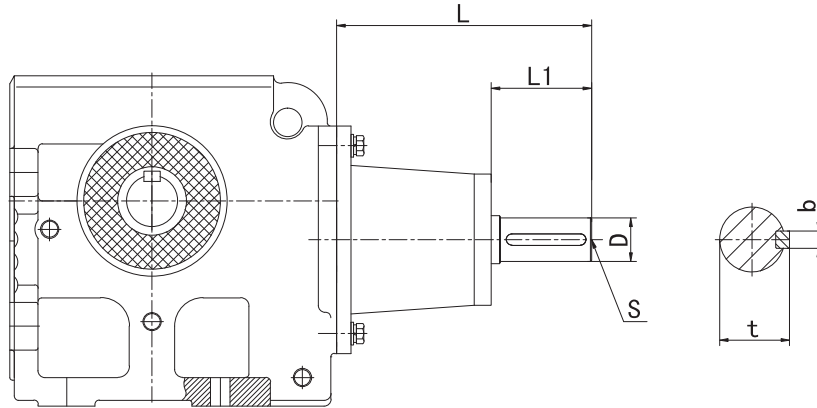




未标注尺寸可相互参照

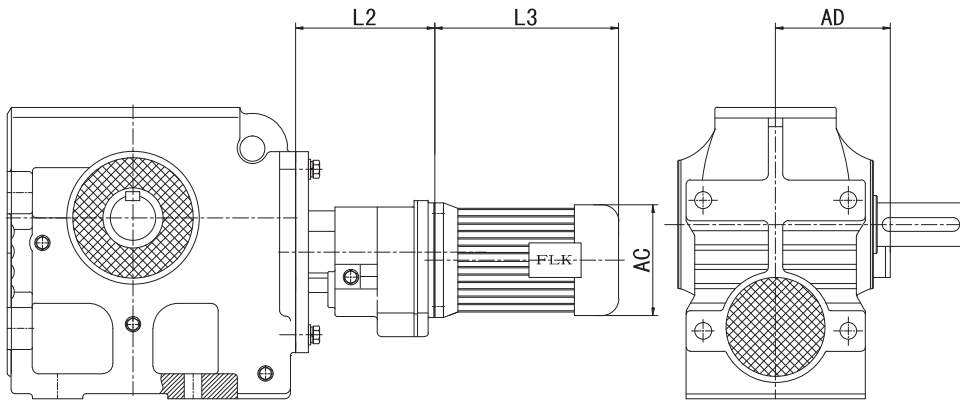
S-AD轴输入型外形尺寸图

S-AD:Dimension Sheet For Input Shaft Type



型号 Gear unit type		输入轴尺寸/Input shaft dimension					
		L	L1	D	t	b	S
S37	AD1	102	40	16	18	5	M5
	AD2	128	40	19	21.5	6	M8
S47	AD2	123	40	19	21.5	6	M5
	AD3	159	50	24	27	8	M8
S57	AD2	128	40	19	21.5	6	M8
S67	AD2	123	40	19	21.5	6	M6
S77	AD3	150	50	24	27	8	M8
	AD4	224	80	38	41	10	M12
S87	AD3	156	60	28	31	8	M10
	AD4	219	80	38	41	10	M12
	AD5	292	110	42	45	12	M16
S97	AD4	214	80	38	41	10	M12
	AD5	287.5	110	42	45	12	M16
	AD6	309	110	48	51.5	14	M16

S-RF多级串联型减速机外形尺寸图
S-RF Multi-stage Reducer Dimension

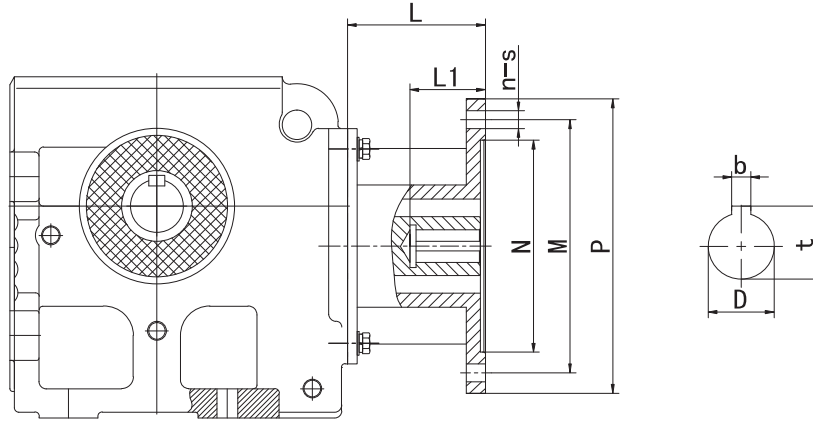


S

型号	机座号	L2	L3	AD	AC
S-67-RF-F-37	Y63	157	222	70	130
	Y71		242	80	145
	Y80		283	145	175
S-77-RF-F-37	Y63	157	222	70	130
	Y71		242	80	145
	Y80		283	145	175
	Y90		322	155	195
S-87-RF-F-57	Y63	187	222	70	130
	Y71		242	80	145
	Y80		283	145	175
	Y90		322	155	195
	Y100		355	180	215
S-97-RF-F-57	Y63	187	222	70	130
	Y71		242	80	145
	Y80		283	145	175
	Y90		322	155	195
	Y100		355	180	215
	Y112		371	190	240

S-AM轴输入型外形尺寸图

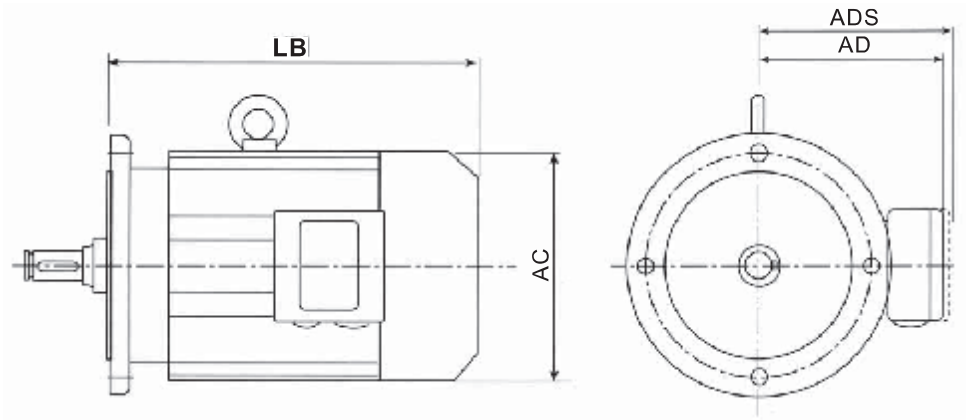
S-AM: Dimension Sheet For Input Shaft Type



型号 Gear unit type	输入轴尺寸/Input shaft dimension										型号 Gear unit type	输入轴尺寸/Input shaft dimension											
	L	L1	D	b	M	N	P	s	t	n		L	L1	D	b	M	N	P	s	t	n		
S37	Y63	65	34	11	4	115	95	140	10	12.8	8	S97	Y100	84.5	63	28	8	215	180	250	15	31.3	8
	Y71	65	34	14	5	130	110	160	10	16.3	8		Y112										
	Y80	65	45	19	6	165	130	200	12	21.8	8		Y132	96	85	38	10	265	230	300	15	41.3	8
	Y90	65	51	24	8	165	130	200	12	27.3	8		Y160	125	113.5	42	12	300	250	350	19	45.3	8
	Y100	95	70	28	8	215	180	250	15	31.3	8		Y180	125	113.5	48	14	300	250	350	19	51.8	8
	Y112													Y200	155	118.5	55	16	350	300	400	19	59.3
Y132	105	84	38	10	265	230	300	15	41.3	8													
S47	Y71	65	34	14	5	130	110	160	10	16.3	8												
	Y80	96	42	19	6	165	130	200	12	21.8	8												
	Y90	96	54	24	8	165	130	200	12	27.3	8												
S57	Y100	79.5	66	28	8	215	180	250	15	31.3	8												
	Y71	65	34	14	5	130	110	160	10	16.3	8												
	Y80	65	45	19	6	165	130	200	12	21.8	8												
S67	Y90	65	51	24	8	165	130	200	12	27.3	8												
	Y100	95	70	28	8	215	180	250	15	31.3	8												
	Y112																						
	Y71	65	34	14	5	130	110	160	10	16.3	8												
	Y80	96	42	19	6	165	130	200	12	21.8	8												
S77	Y90	96	54	24	8	165	130	200	12	27.3	8												
	Y100	79.5	66	28	8	215	180	250	15	31.3	8												
	Y112																						
	Y80	91	64	19	6	165	130	200	12	21.8	8												
	Y90	121	64	24	8	165	130	200	12	27.3	8												
S87	Y100	121	64	28	8	215	180	250	15	31.3	8												
	Y112																						
	Y132	121	84	38	10	265	230	300	15	41.3	8												
	Y160	155	115	42	12	300	250	350	19	45.3	8												
S87	Y90	84.5	63	24	8	165	130	200	12	27.3	8												
	Y100	84.5	63	28	8	215	180	250	15	31.3	8												
	Y112																						
	Y132	96	85	38	10	265	230	300	15	41.3	8												
	Y160	125	116	42	12	300	250	350	19	45.3	8												
Y180	125	116	48	14	300	250	350	19	51.8	8													



K·R·F·S系列与电机直联时电机外形尺寸图 / Outline Dimensional Drawing For Special Motors



S

电机机座号 / Motor Size	LB	AC	AD
Y63	222	130	70
Y71	242	145	80
Y80	283	175	145
Y90S	297	195	155
Y90L	322	195	155
Y100L	355	215	180
Y112M	371	240	190
Y132S	410	275	210
Y132M	450	275	210
Y160M	494	330	255
Y160L	550	330	255
Y180M	585	380	280
Y180L	625	380	280
Y200L	660	420	305
Y225S	680	470	335
Y225M	705	470	335
Y250M	770	510	370
Y280S	835	580	410
Y280M	885	580	410
Y315S	1040	645	530
Y315M	1150	645	530
Y315L	1150	645	530

说明：图中ADS为防爆等特殊电机接线盒所示尺寸，此处未列出，如有需要，请向我们咨询。

ADS is the dimension for the explosion-proof motors and other special motors, please contact us for details.